

Littleton
PUBLIC SCHOOLS



Health Services



POOLED TESTING WEEKLY UPDATE

April 1st, 2021

Now that we have begun our transition to full in person learning, we continue to see our consent numbers increase and we would love to continue to see that number grow. The district was so excited to welcome our K-8 learners this past Monday and are eagerly anticipating our students in grades 9-12+ who will be joining full in person learning on April 12th. It continues to be so important to consider participating in pooled testing.

Please complete the linked google form to fill out a consent:

STUDENT CONSENT: <https://forms.gle/Np8JpXsvX9qShsfx9>

STAFF CONSENT: <https://forms.gle/P9wbS1ft9LeicRwYA>

P.S. We **love** questions so please do not hesitate to contact us with any questions you may have!!

IF YOU HAVE QUESTIONS....WE HAVE ANSWERS!!



Please reach out to us with any questions!

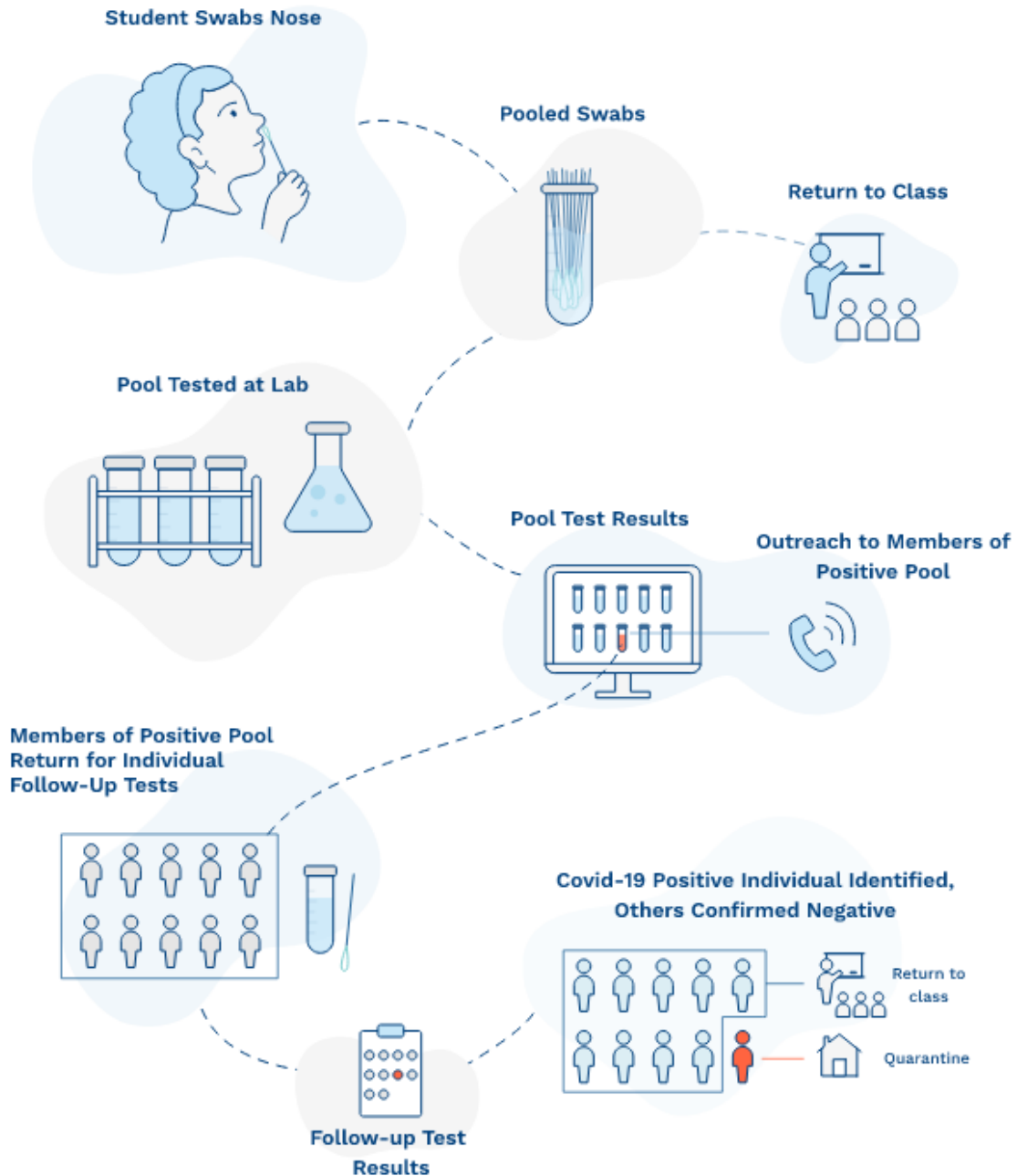
Lyn Snow - lsnow@littletonps.org

Mary Philpot - mphilpot@littletonps.org

Questions?







If you have any questions, please contact Mary Philpot at mphilpot@littletonps.org or Lyn Snow at lsnow@littletonps.org

How On-Site Pooled Testing Works in Schools



<https://covidtesting.com>

Check out this fire prevention, response, and detection analogy as a framework for understanding how best to mitigate the spread of COVID-19

	
TO PREVENT A FIRE	TO PREVENT COVID-19
Unplug/limit use of electric toaster ovens Limit use of use of electric heaters Get a permit for open outdoor fires	Wear masks Social distance Group and separate
	
TO CONTAIN A FIRE	TO CONTAIN COVID-19
Activate sprinkler systems Sound alarms and alert 911 Evacuate the building	Contact tracing Shelter in place Isolate and Quarantine
	
TO DETECT A FIRE	TO DETECT COVID-19
Smoke alarms Carbon monoxide alarms Thermal imaging cameras	Lab-based testing Point-of-care testing Over-the-counter tests

<https://whentotest.org>