

Covid-19 Health Metrics

March 11, 2021

MA State Data



Massachusetts Department of Public Health | COVID-19 Dashboard

Trends: 7-day Averages Over Time

Released on: March 11, 2021
Data as of: March 10, 2021
Caution: recent data may be incomplete

Navigation

Today's Overview

Overview Trends

COVID-19 Cases

COVID-19 Testing

Hospitalization

COVID-19 Deaths

Higher Ed & LTCF

Patient Breakdown

City and Town

Resources

Data Archive

Date Filter

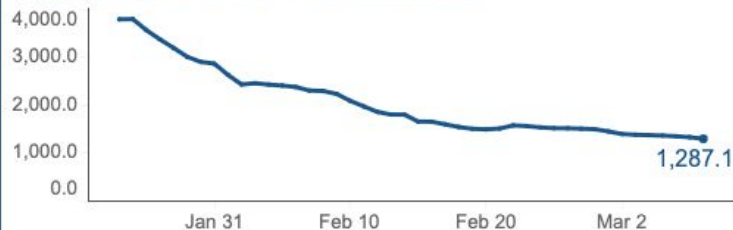
1/24/2021

3/8/2021



Cases

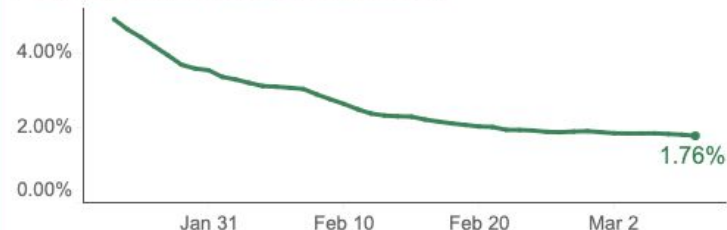
7-day average of COVID-19 confirmed cases



The lowest observed value was 156.7 on 7/4/2020.

Testing

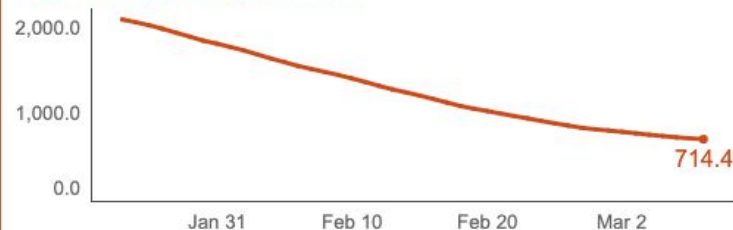
7-day weighted average percent positivity



The lowest observed value was 0.8% on 9/21/2020.

Hospitalizations

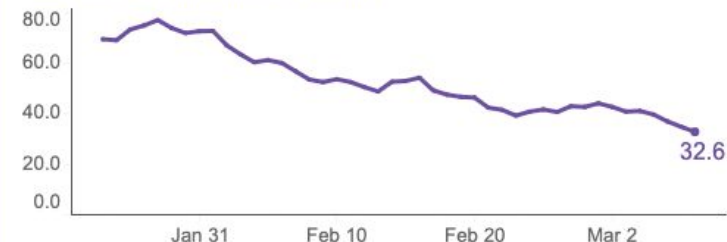
7-day average of hospitalizations



The lowest observed value was 155.3 on 8/26/2020.

Deaths

7-day average of confirmed deaths



The lowest observed value was 3.7 on 9/9/2020.

For details on the definitions of each indicator please see the corresponding tab for that indicator. All data included in this dashboard are preliminary and subject to change. Data Sources: COVID-19 Data provided by the Bureau of Infectious Disease and Laboratory Sciences and the Registry of Vital Records and Statistics; Created by the Massachusetts Department of Public Health, Bureau of Infectious Disease and Laboratory Sciences, Office of Integrated Surveillance and Informatics Services.

Littleton Data



Massachusetts Department of Public Health COVID-19 Dashboard - Friday, November 06, 2020

Average Daily Incidence Rate per 100,000 Color Calculations

Per UMass Donahue Institute
Littleton = 9756

Group	Population		
	Under 10K	10K-50K	Over 50K
Grey	Less than or equal to 10 total cases	Less than or equal to 10 total cases	Less than or equal to 15 total cases
Green	Less than or equal to 15 total cases	<10 avg cases/100k AND >10 total cases	<10 avg cases/100k AND >15 total cases
Yellow	Less than or equal to 25 total cases	≥10 avg cases/100k OR ≥5% pos rate	≥10 avg cases/100k OR ≥ 4% pos rate
Red	More than 25 total cases	≥10 avg cases/100k AND ≥5% pos rate	≥10 avg cases/100k AND ≥4% pos rate

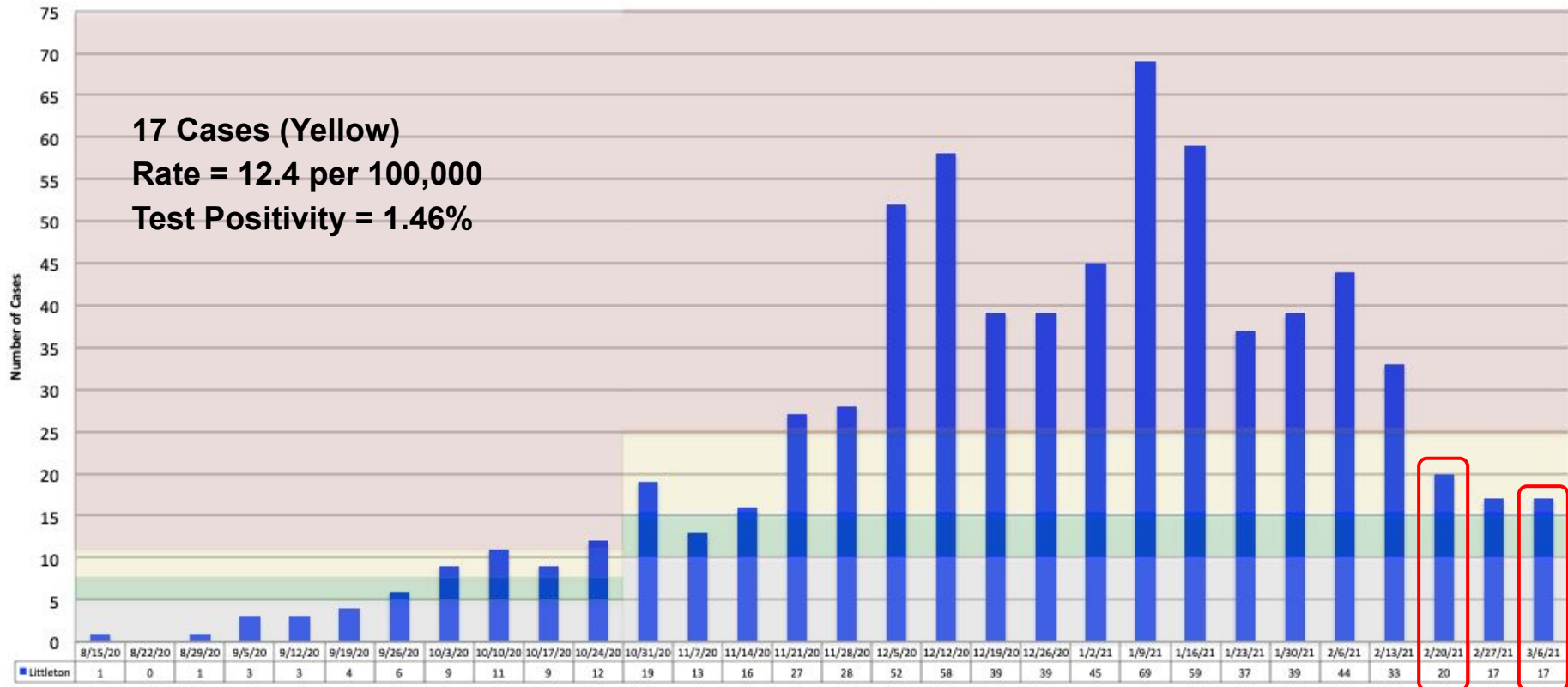
As of 11/5, DPH is using 2019 population estimates derived from a method developed by the University of Massachusetts Donahue Institute.
The 2019 estimates are the most currently available data.

Littleton: Number of Cases in 14-Day Period

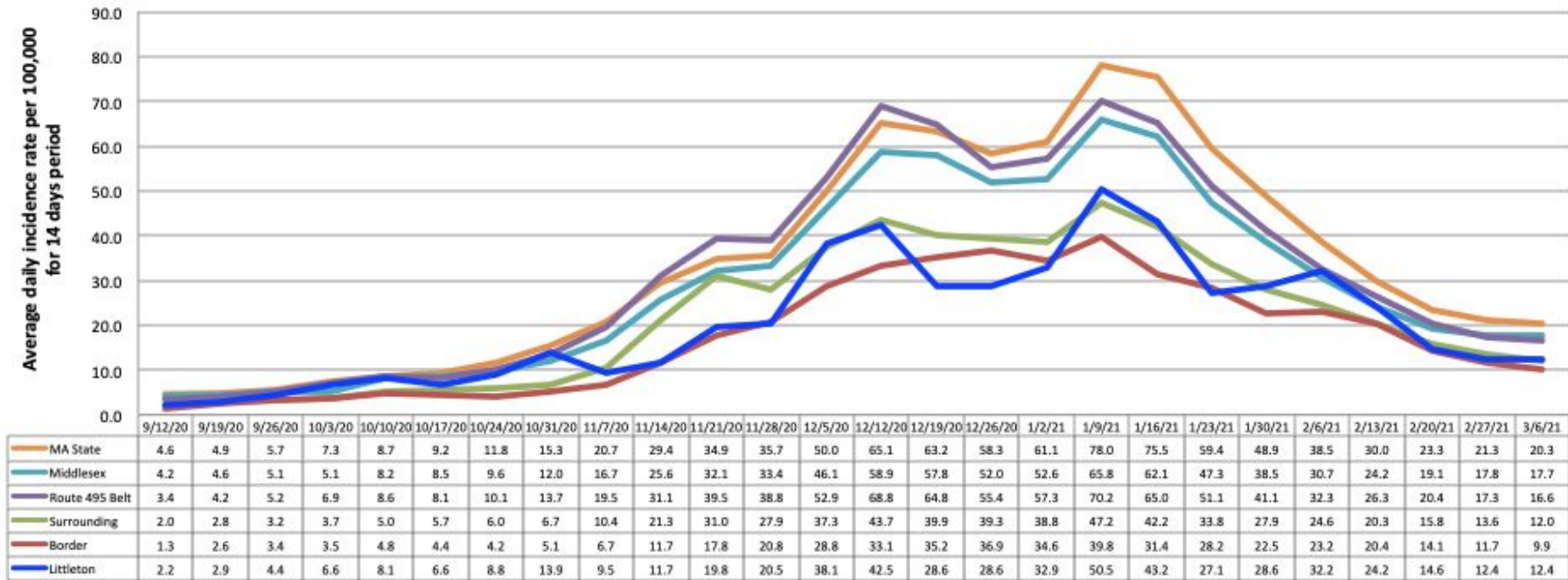
17 Cases (Yellow)

Rate = 12.4 per 100,000

Test Positivity = 1.46%

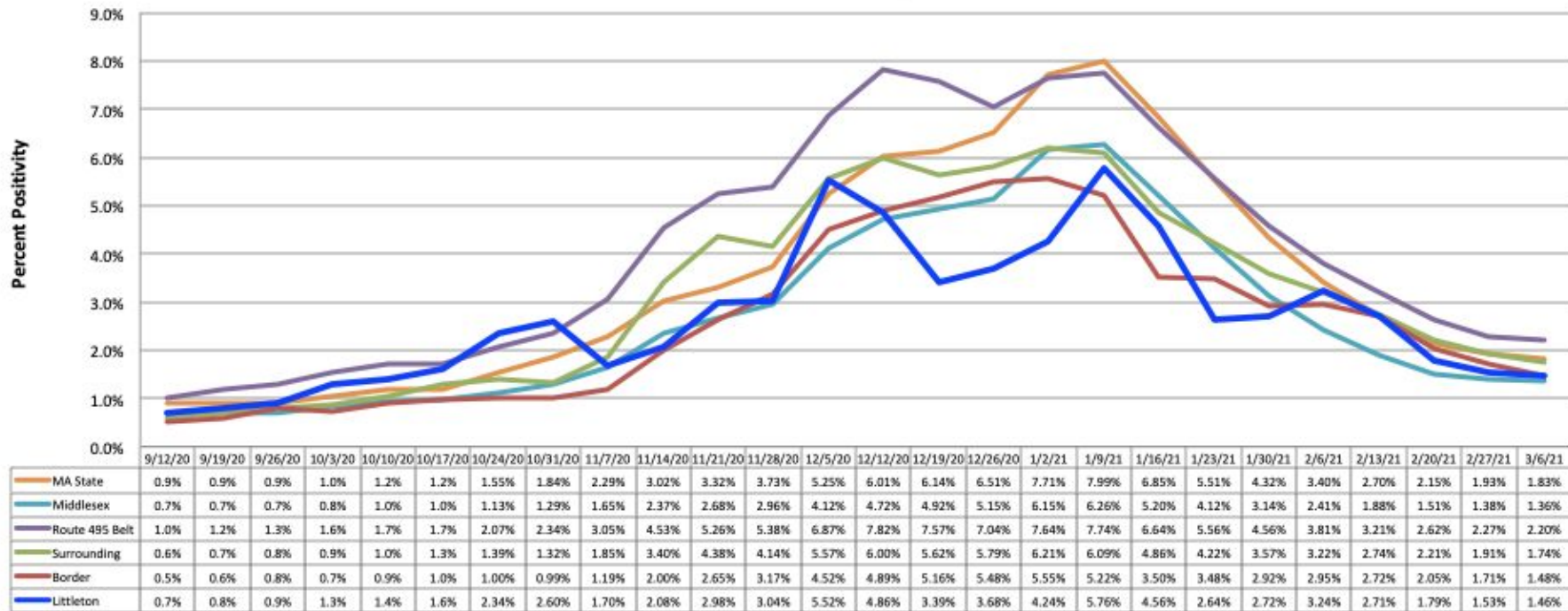


Average Daily Incidence Rate per 100,000 for Past 14 Days



Littleton - Rate 12.4 per 100k

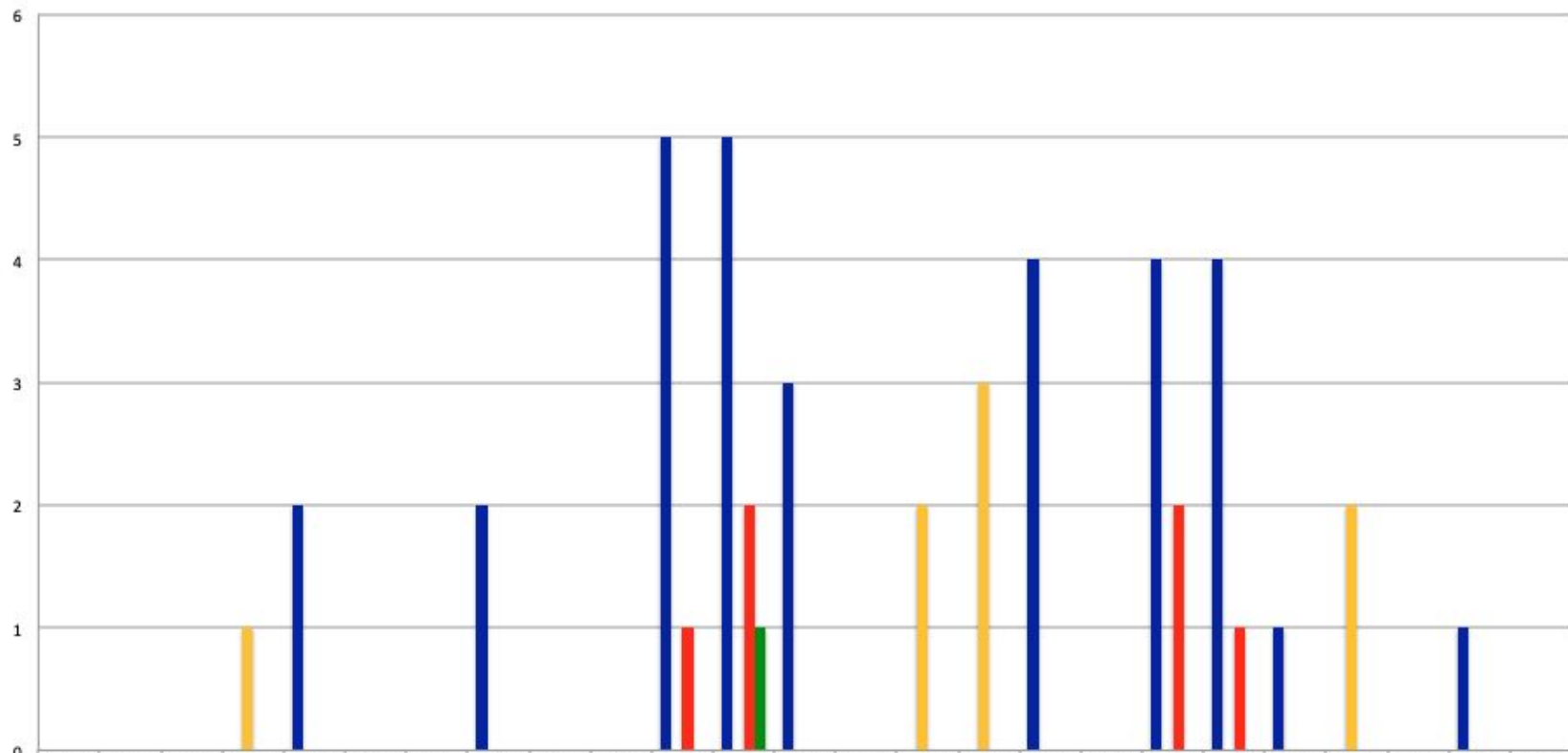
Total Test Positivity



Littleton: 1304 tests

Test positivity 1.46%

LPS Health Notification Letters

[illegible]

www.mass.gov/covid-19-vaccine

Vaccine Preregistration Signup

Sign up to be notified about appointments at mass vaccination locations



Add your name
to the list



Get notified when
appointments are
available



Schedule your
appointment within
24 hours

Multiple Layers Improve Success

The Swiss Cheese Respiratory Pandemic Defense recognizes that no single intervention is perfect at preventing the spread of the coronavirus. Each intervention (layer) has holes.

