

Covid-19 Health Metrics

December 16, 2021

Prepared by Katrina Wilcox Hagberg, MPH

MA State Data



Massachusetts Department of Public Health | COVID-19 Dashboard

Trends: 7-day Averages Over Time

Released on: December 16, 2021
Data as of: December 15, 2021
Caution: recent data may be incomplete

Navigation

Today's Overview

Overview Trends

COVID-19 Cases

COVID-19 Testing

Hospitalizations

COVID-19 Deaths

Higher Ed & LTCF

Patient Breakdown

City & Town Data

Resources

Data Archive

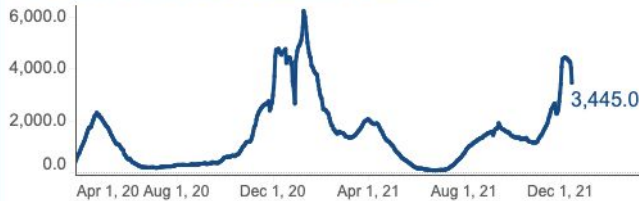
Select dates:

3/1/2020 12/15/2021



Cases

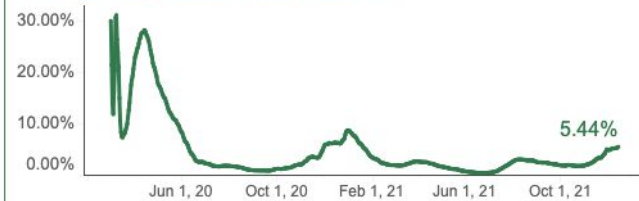
7-day average of COVID-19 confirmed cases



The lowest observed value was 64.1 on 6/25/2021.

Testing

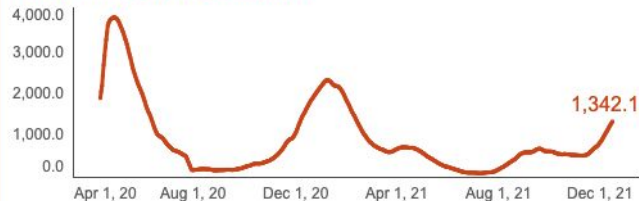
7-day weighted average percent positivity



The lowest observed value was 0.31% on 6/25/2021.

Hospitalizations

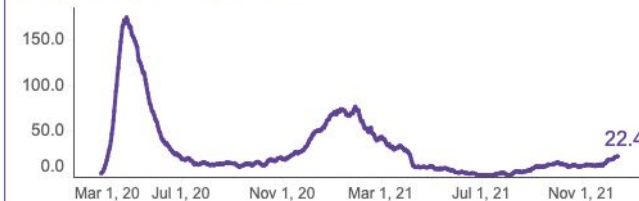
7-day average of hospitalizations



The lowest observed value was 84.8 on 7/9/2021.

Deaths

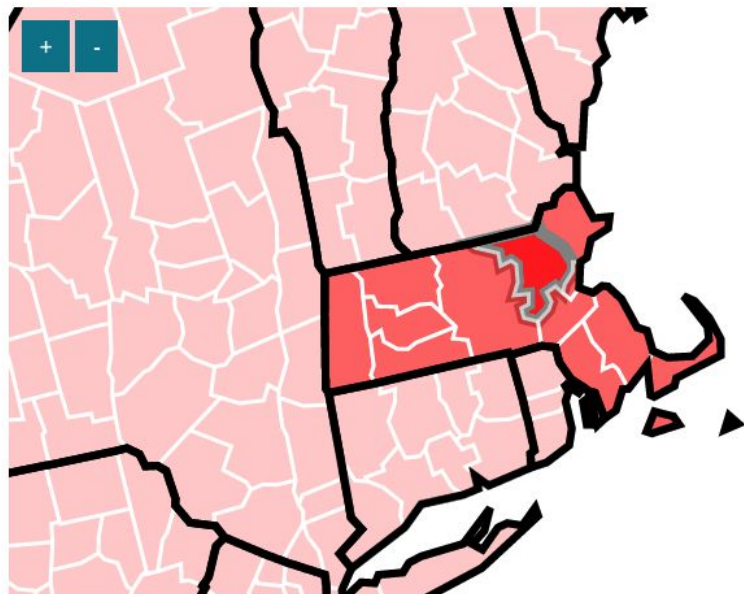
7-day average of confirmed deaths



The lowest observed value was 1.3 on 7/11/2021.

The lowest observed value is since tracking of the lowest value began on April 15, 2020. For details on the definitions of each indicator please see the corresponding tab for that indicator. All data included in this dashboard are preliminary and subject to change. Data Sources: COVID-19 Data provided by the Bureau of Infectious Disease and Laboratory Sciences and the Registry of Vital Records and Statistics; Created by the Massachusetts Department of Public Health, Bureau of Infectious Disease and Laboratory Sciences, Division of Surveillance, Analytics and Informatics.

CDC Community Transmission Rates



Middlesex County

High Community Transmission

Case Rate last 7 days = 365 per 100k

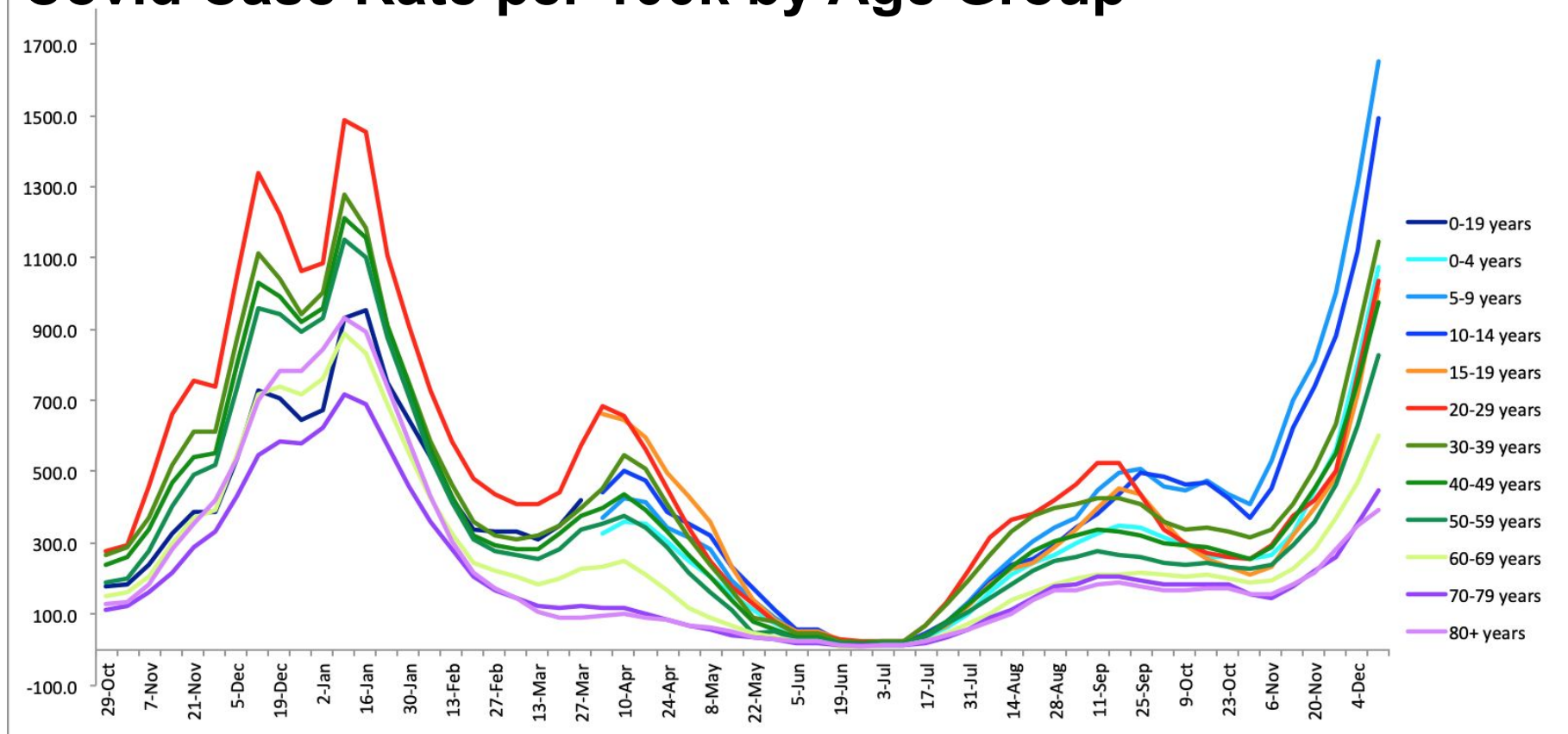
Percent Positivity = 3.7%

● High ● Substantial ● Moderate ● Low ● No Data

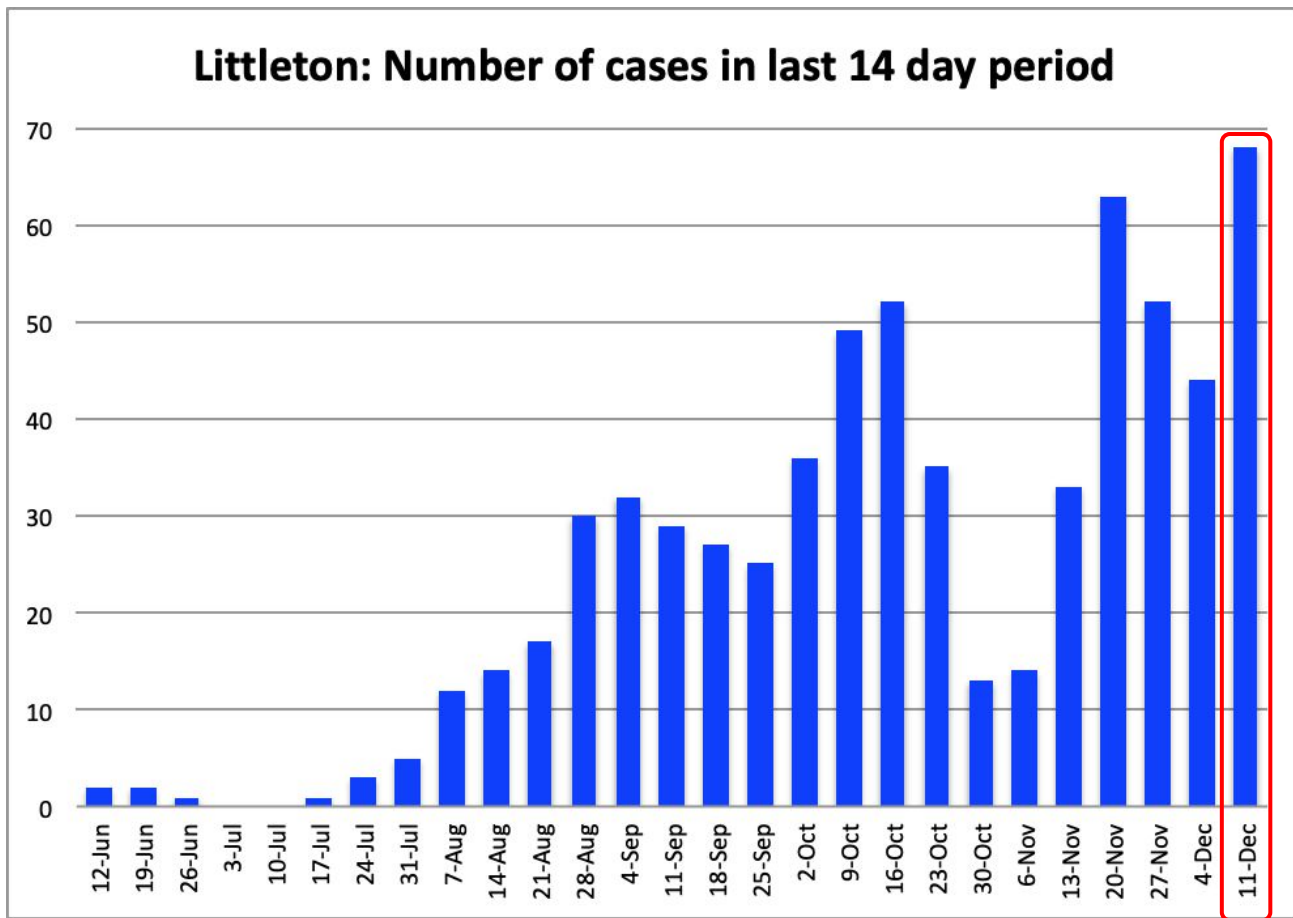
Current 7-days is Wed Dec 08 2021 - Tue Dec 14 2021 for case rate and Mon Dec 06 2021 - Sun Dec 12 2021 for percent positivity. The percent change in counties at each level of transmission is the absolute change compared to the previous 7-day period.

Data Source: CDC Covid-19 Integrated County View - <https://covid.cdc.gov/covid-data-tracker/#county-view> - accessed 12/16/21

Covid Case Rate per 100k by Age Group



Littleton Data



Data Source: MA DPH Covid Dashboard - www.mass.gov/info-details/covid-19-response-reporting (City and Town Data) - accessed 12/16/21

Littleton and Local Trends - Methods

Town Groupings:

- **Littleton**
- **Border Towns** - Littleton plus Acton, Ayer, Boxborough, Groton, Harvard, Westford
- **Surrounding Communities** - Border Towns plus, Bolton, Carlisle, Chelmsford, Concord, Dunstable, Lancaster, Lunenburg, Maynard, Pepperell, Shirley, Stow
- **495 Belt** - Surrounding Communities plus Ashby, Bedford, Berlin, Boylston, Clinton, Hudson, Leominster, Lincoln, Lowell, Marlborough, Northborough, Shrewsbury, Southborough, Sterling, Sudbury, Townsend, Tyngsboro, Wayland, West Boylston, Westborough, Weston
- **Middlesex County**
- **Massachusetts**

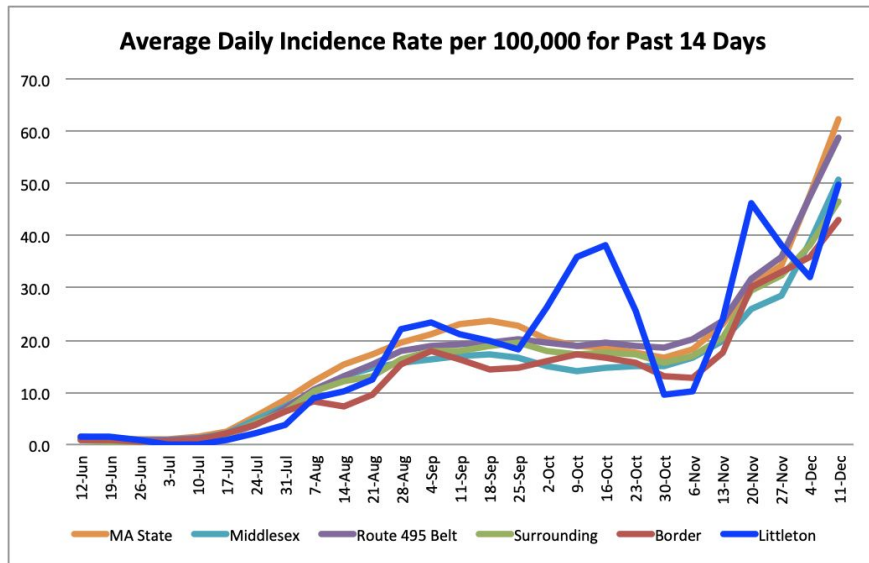
Data Source and Time Period:

- MA DPH Covid Dashboard - www.mass.gov/info-details/covid-19-response-reporting, City and Town Data
- Two week period (Sunday to Saturday) ending the Saturday before the DPH report is released on Thursdays

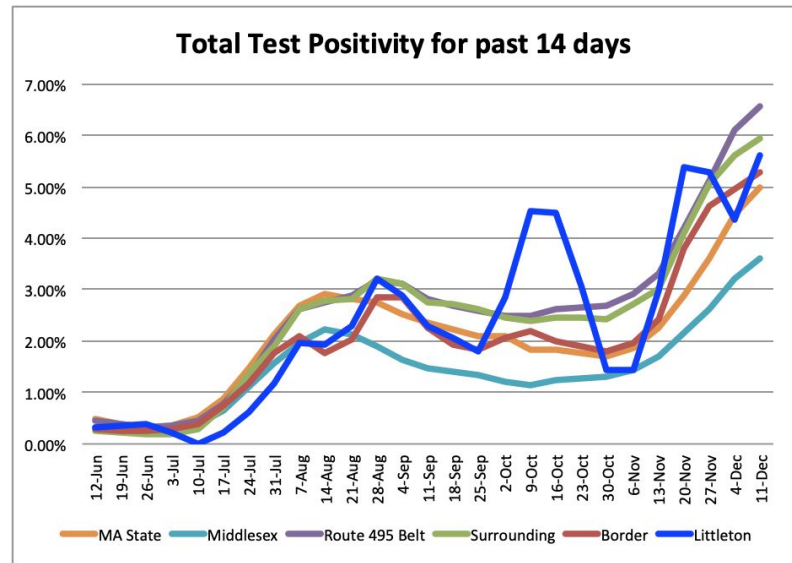
Calculations:

- **Average Daily Incidence Rate** = ((total cases in two week period / 14 days) / population)*100,000
- **Test Positivity** = total positive tests in last two week period / total tests conducted in last two week period

Littleton and surrounding area - trends

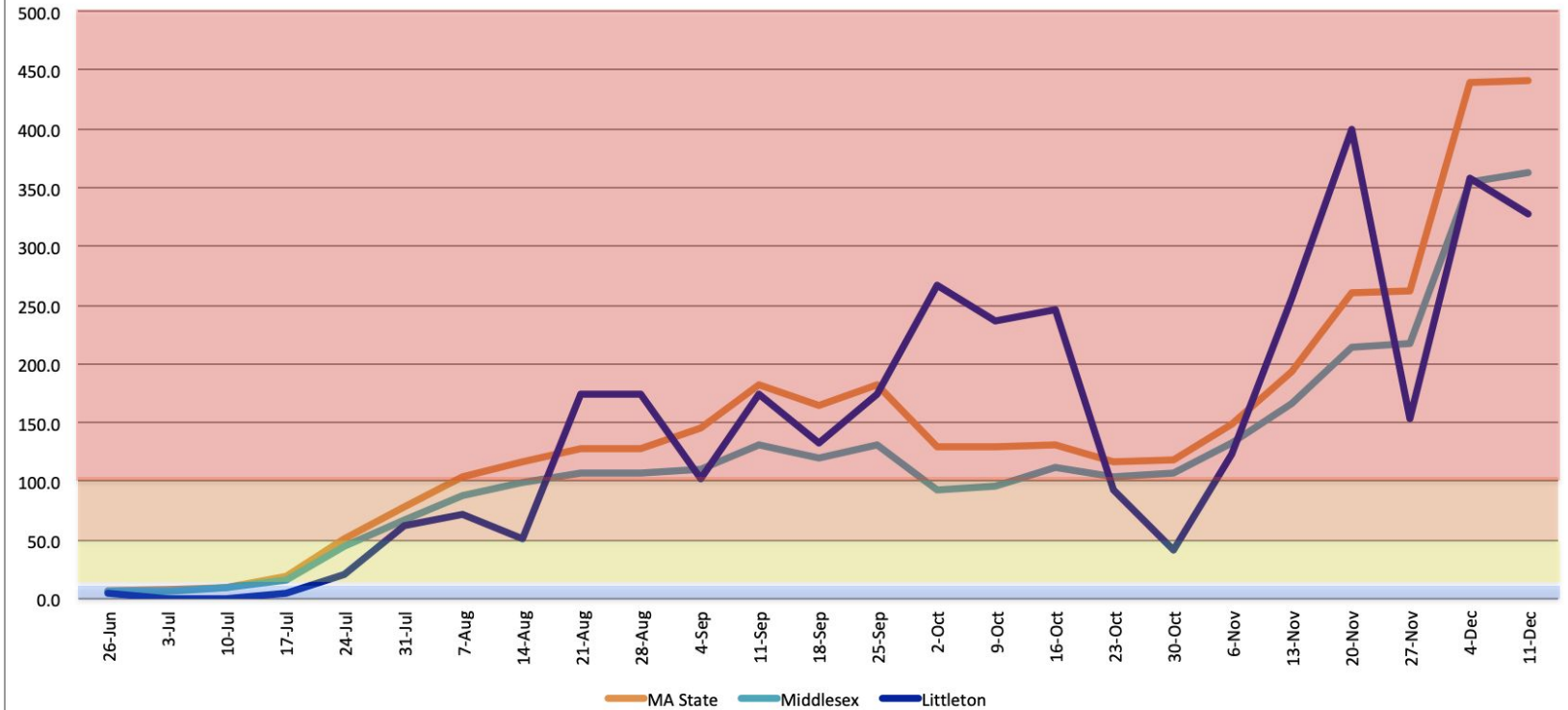


- Littleton's average daily incidence rate was 49.8 per 100k (higher)
- All other areas we track continue to trend higher
- Rates for Middlesex County and State nearly doubled



- Littleton had 1249 tests conducted (higher)
- Littleton's test positivity = 5.6% (higher)
- Test positivity continues to trend higher for all areas we track

CDC Community Transmission Indicator: Total new cases per 100k persons in the past 7 days



Data Source: MA DPH Covid Dashboard - www.mass.gov/info-details/covid-19-response-reporting (City and Town Data) - accessed 12/16/21

LPS Covid-19 cases last 6 weeks

11/6-11/12 11/13-11/19 11/20-11/26 11/27-12/3 12/4-12/10 12/11-12/17

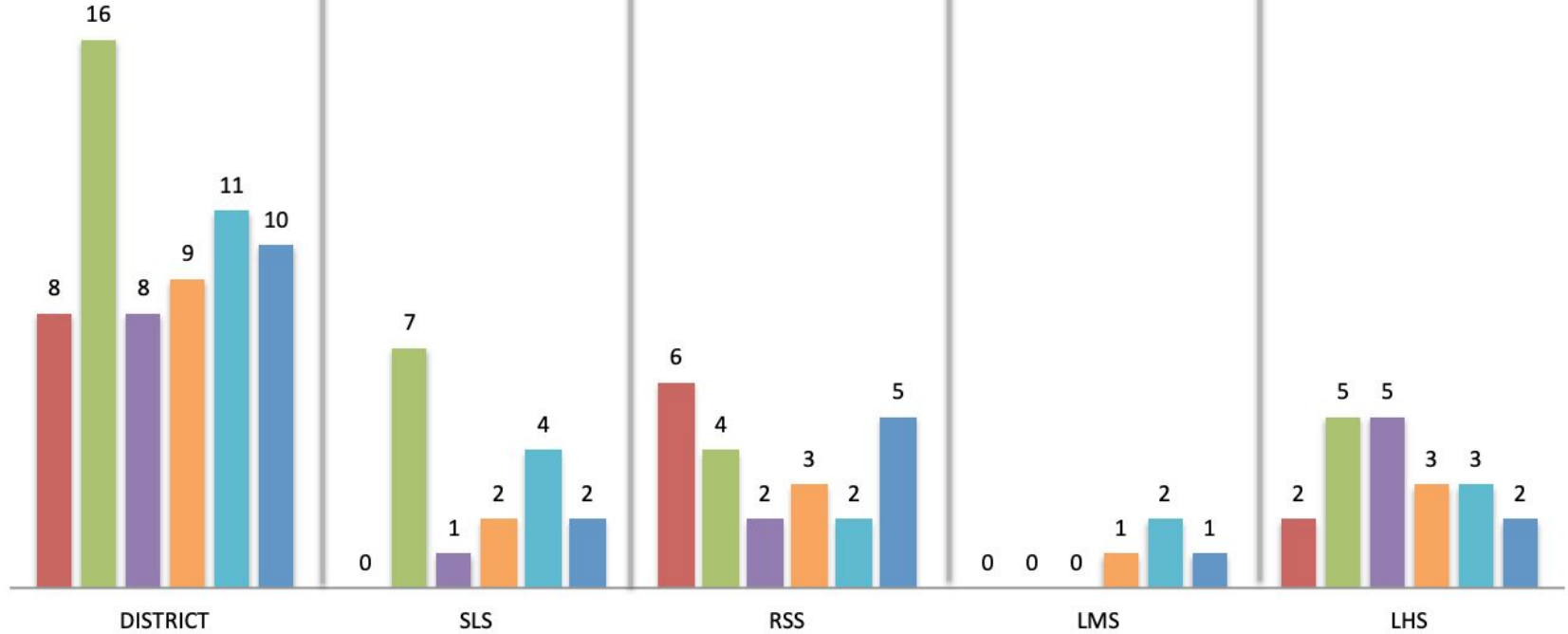
District Total = 100

SLS Total = 29

RSS Total = 29

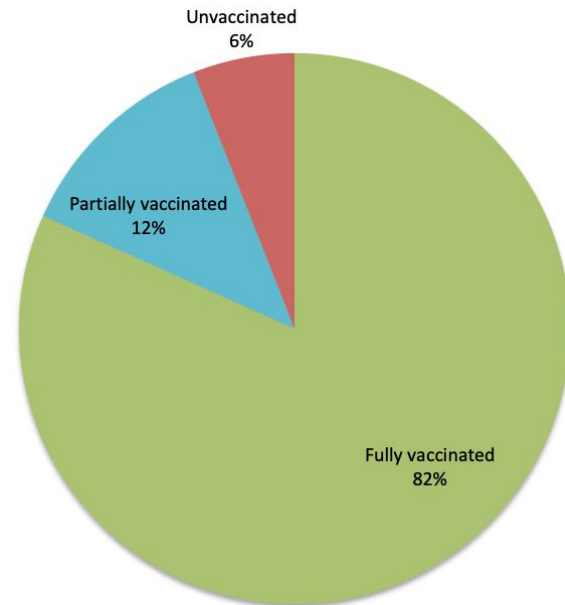
LMS Total = 10

LHS Total = 32



Littleton Vaccination Coverage

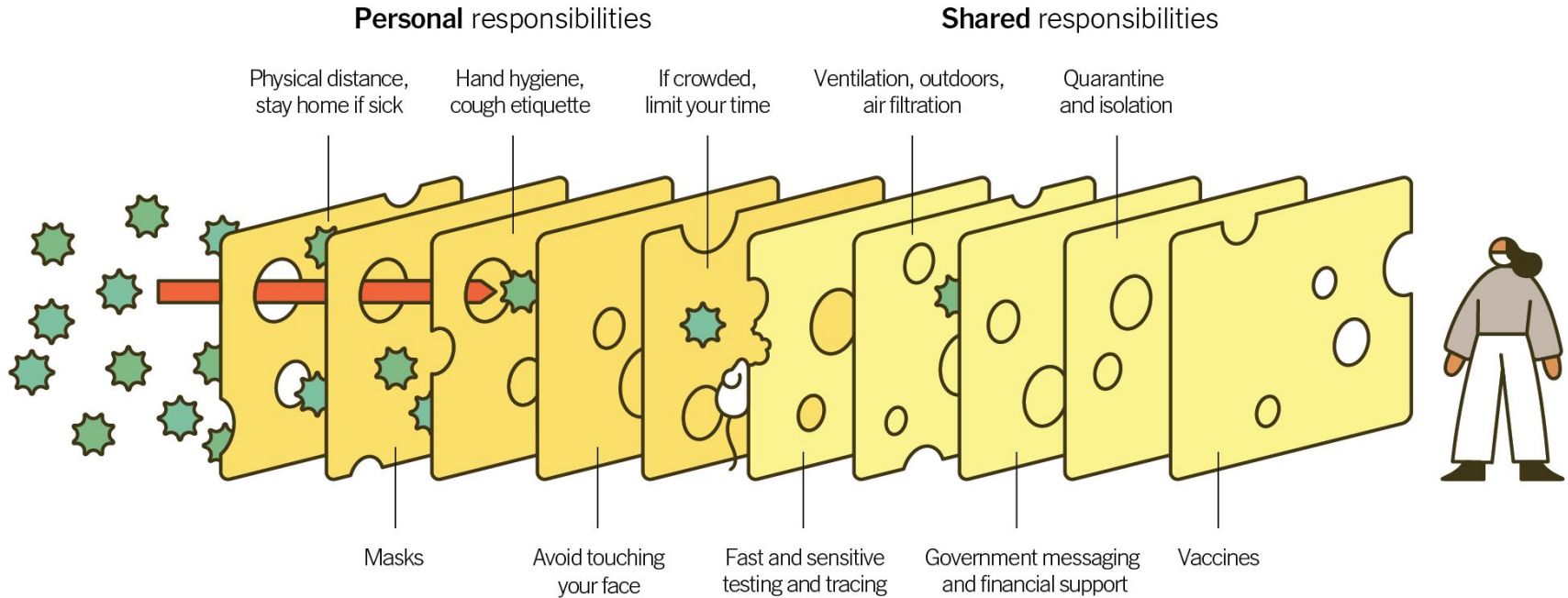
Age Group	Fully Vaccinated	Partially Vaccinated	Unvaccinated
0-4 years	Not eligible	Not eligible	Not eligible
5-11 years	340 (43%)	389 (49%)	70 (9%)
12-15 years	497 (>95%)	50 (10%)	*
16-19 years	450 (81%)	23 (4%)	86 (15%)
20-29 years	826 (91%)	104 (11%)	*
30-49 years	2087 (95%)	220 (10%)	*
50-64 years	2192 (88%)	172 (7%)	124 (5%)
65-74 years	968 (>95%)	130 (13%)	*
75+ years	612 (78%)	113 (14%)	60 (8%)
Total	7972 (81.7%)	1202 (12%)	582 (6%)



Data Source:
MA DPH Weekly Covid-19 municipality vaccination data - www.mass.gov/info-details/massachusetts-covid-19-vaccination-data-and-updates - accessed 12/16/21
Note: 0-4 data imputed based on population and eligibility.

Multiple Layers Improve Success

The Swiss Cheese Respiratory Pandemic Defense recognizes that no single intervention is perfect at preventing the spread of the coronavirus. Each intervention (layer) has holes.



Source: Adapted from Ian M. Mackay (virologydownunder.com) and James T. Reason. Illustration by Rose Wong

Image from: www.nytimes.com/2020/12/05/health/coronavirus-swiss-cheese-infection-mackay.html

Enable MassNotify on your smartphone

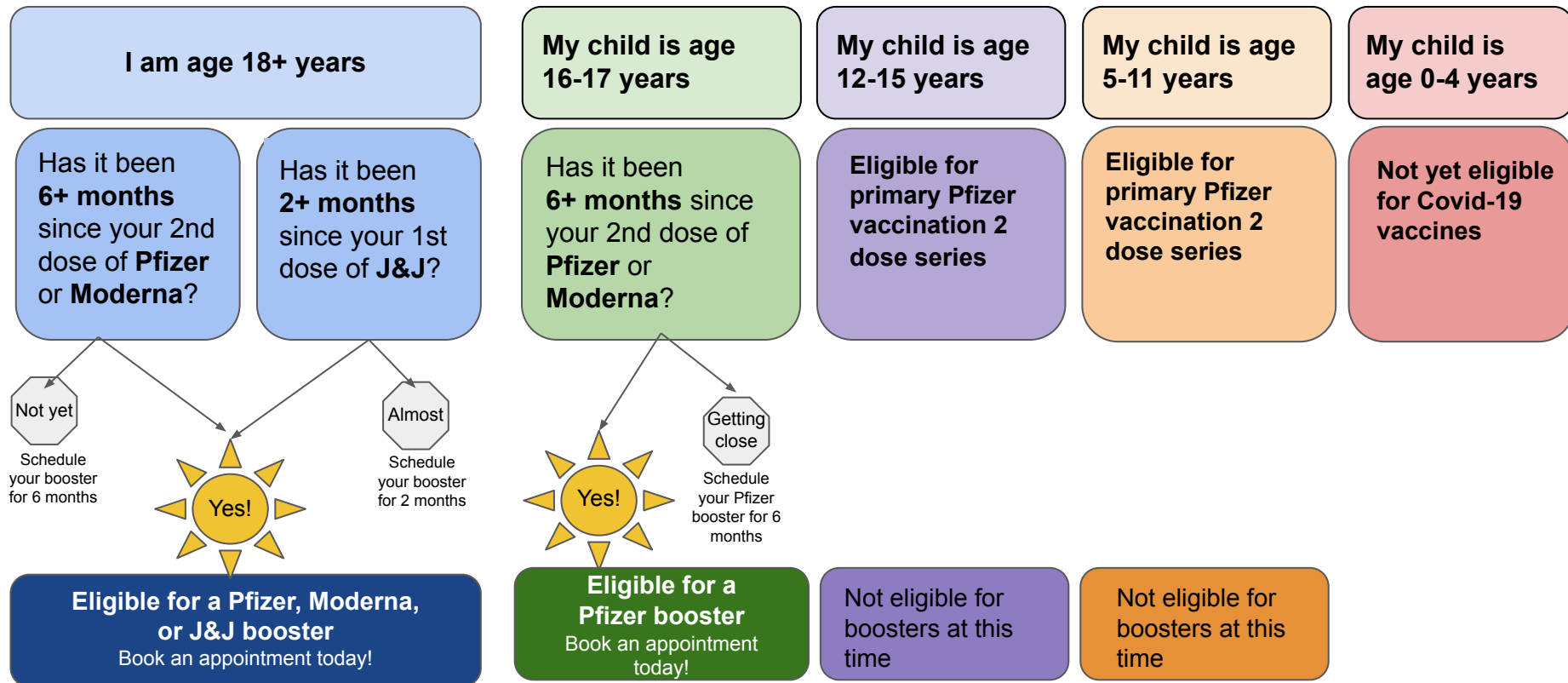
Add your phone to the fight. Know if you've been exposed and help stop the spread of COVID-19.



Learn how to enable MassNotify on your phone at

www.mass.gov/info-details/enable-massnotify-on-your-smartphone

Can I get a Covid-19 vaccine or booster?



Safer Ways to Celebrate the Holidays

We have several tools to help enjoy holiday traditions while protecting your family and friends

Get Vaccinated / Booster

- **Vaccination is the best way to minimize risk of Covid-19 among attendees**
- Vaccination significantly lowers the risk of transmission at the event
- If transmission was to occur, vaccination protects individuals from severe outcomes, hospitalizations, and death

Get tested

- Test immediately before an event to limit risk of infectious person being present
- Test 3 days after event to prevent onward transmission
- Use rapid antigen tests - results in 15 minutes, can be purchased over-the-counter

Make plans for safe travel

Improve ventilation

- Open doors and windows
- HEPA filtration
- Outdoors safer than indoors

Wear a mask indoors

- Well-fitting, better quality
- Worn over nose and mouth

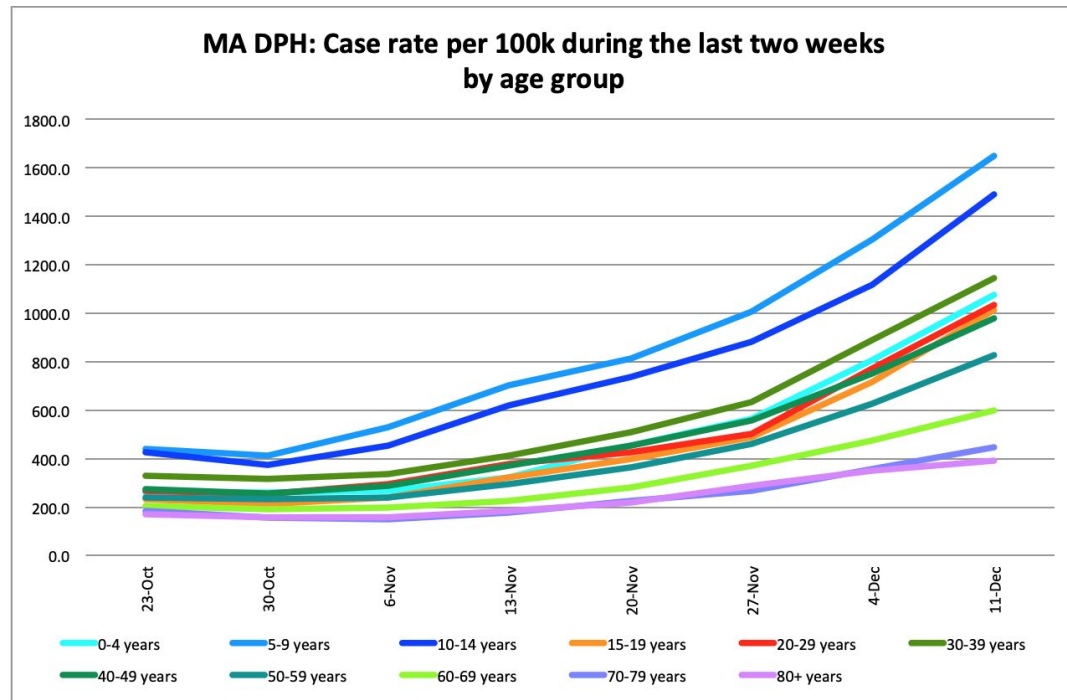
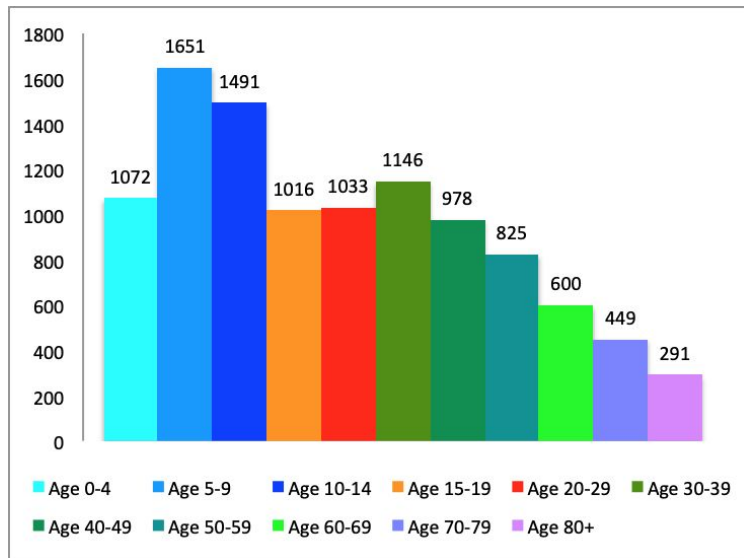
Special considerations

- Immunocompromised should follow recommendations for unvaccinated people, including wearing a mask

Know when not to attend or host

- If you or anyone in your household is sick or has symptoms
- If you've had a known exposure to someone with Covid-19

Covid Case Rate per 100k by age group - last 6 weeks



Data Source: MA DPH Covid Dashboard www.mass.gov/info-details/covid-19-response-reporting (Patient Breakdown) - accessed 12/16/21