

Covid-19 Health Metrics

November 18, 2021

Prepared by Katrina Wilcox Hagberg, MPH

MA State Data



Massachusetts Department of Public Health | COVID-19 Dashboard

Trends: 7-day Averages Over Time

Released on: November 18, 2021
Data as of: November 17, 2021
Caution: recent data may be incomplete

Navigation

Today's Overview

Overview Trends

COVID-19 Cases

COVID-19 Testing

Hospitalizations

COVID-19 Deaths

Higher Ed & LTCF

Patient Breakdown

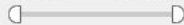
City & Town Data

Resources

Data Archive

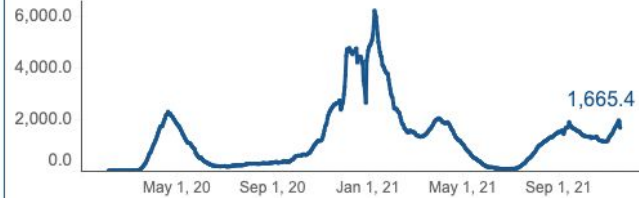
Select dates:

1/29/2020 11/17/2021



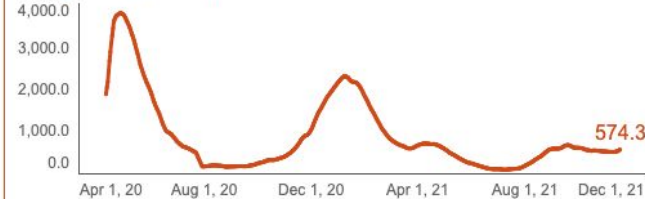
Cases

7-day average of COVID-19 confirmed cases



Hospitalizations

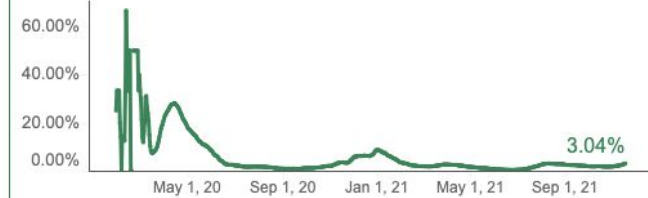
7-day average of hospitalizations



The lowest observed value is since tracking of the lowest value began on April 15, 2020. For details on the definitions of each indicator please see the corresponding tab for that indicator. All data included in this dashboard are preliminary and subject to change. Data Sources: COVID-19 Data provided by the Bureau of Infectious Disease and Laboratory Sciences and the Registry of Vital Records and Statistics; Created by the Massachusetts Department of Public Health, Bureau of Infectious Disease and Laboratory Sciences, Division of Surveillance, Analytics and Informatics.

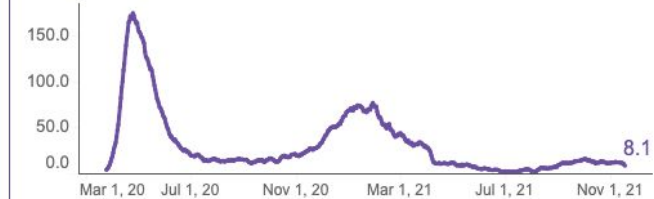
Testing

7-day weighted average percent positivity



Deaths

7-day average of confirmed deaths



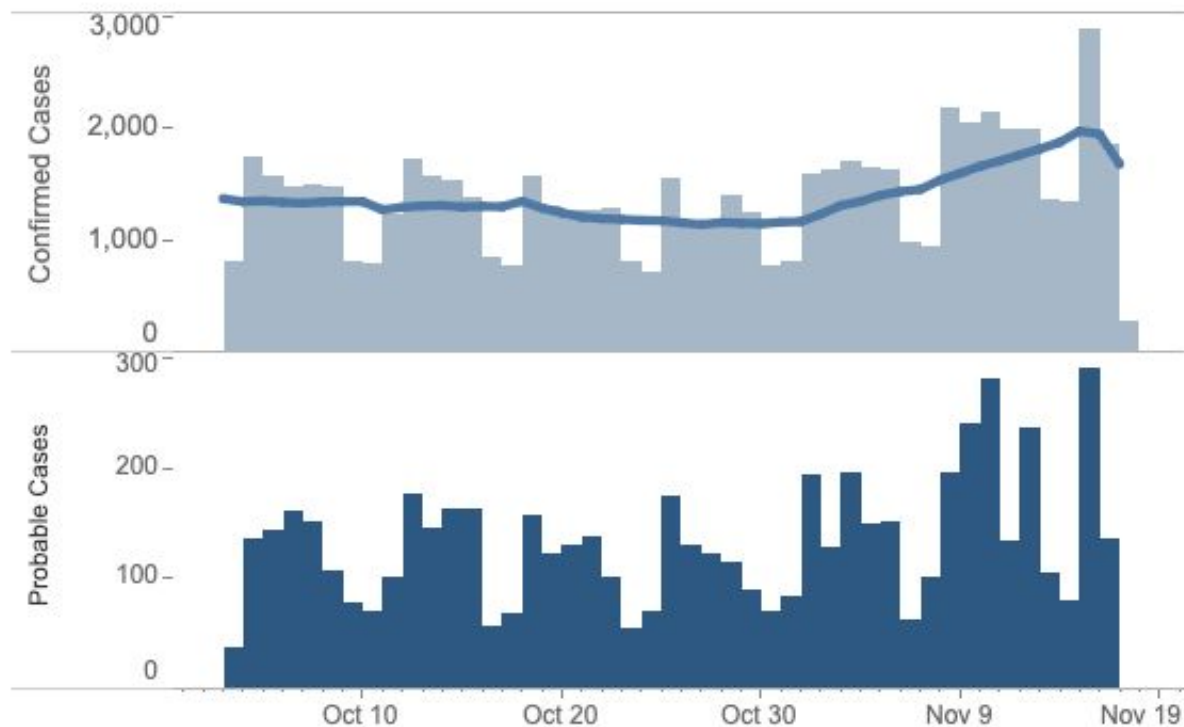
COVID-19 Confirmed and Probable Cases

Select dates:

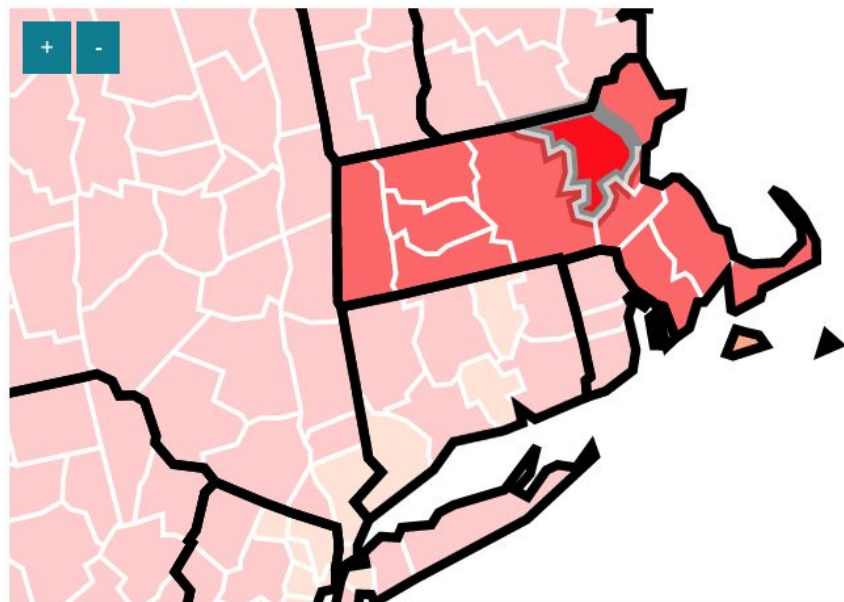
10/3/2021



11/17/2021



CDC Community Transmission Rates



Middlesex County

High Community Spread (Red)

Case Rate last 7 days = 157 per 100k (higher)

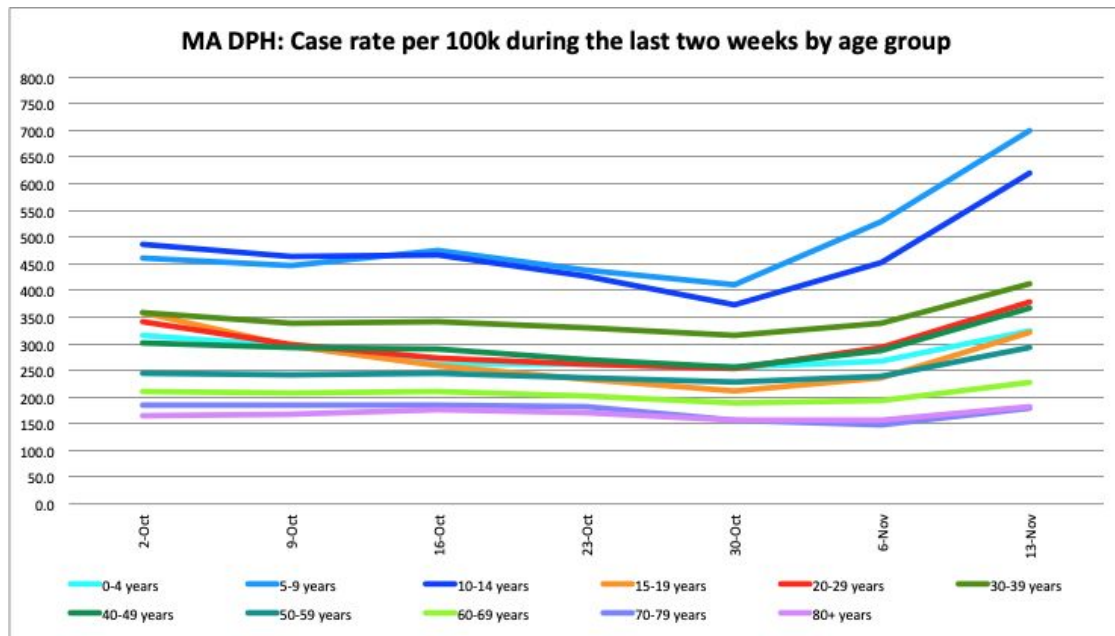
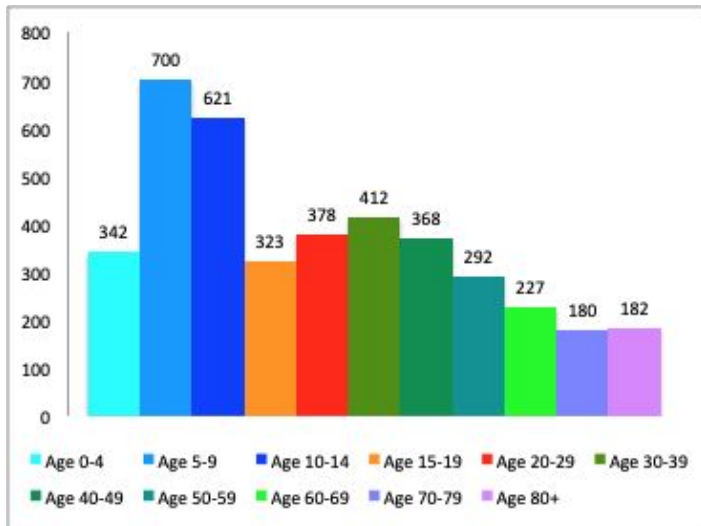
Percent Positivity = 1.9% (higher)

● High ● Substantial ● Moderate ● Low ● No Data

Current 7-days is Wed Nov 10 2021 - Tue Nov 16 2021 for case rate and Mon Nov 08 2021 - Sun Nov 14 2021 for percent positivity. The percent change in counties at each level of transmission is the absolute change compared to the previous 7-day period.

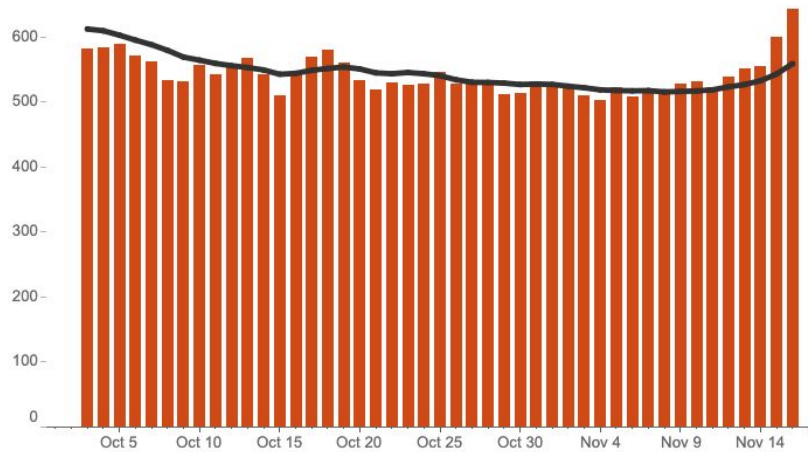
Data Source: CDC Covid-19 Integrated County View - <https://covid.cdc.gov/covid-data-tracker/#county-view> - accessed 11/18/21

Covid Case Rate per 100k by age group - last 6 weeks



Data Source: MA DPH Covid Dashboard www.mass.gov/info-details/covid-19-response-reporting (Patient Breakdown) - accessed 11/18/21

Number and 7-day average of COVID-19 patients in the hospital



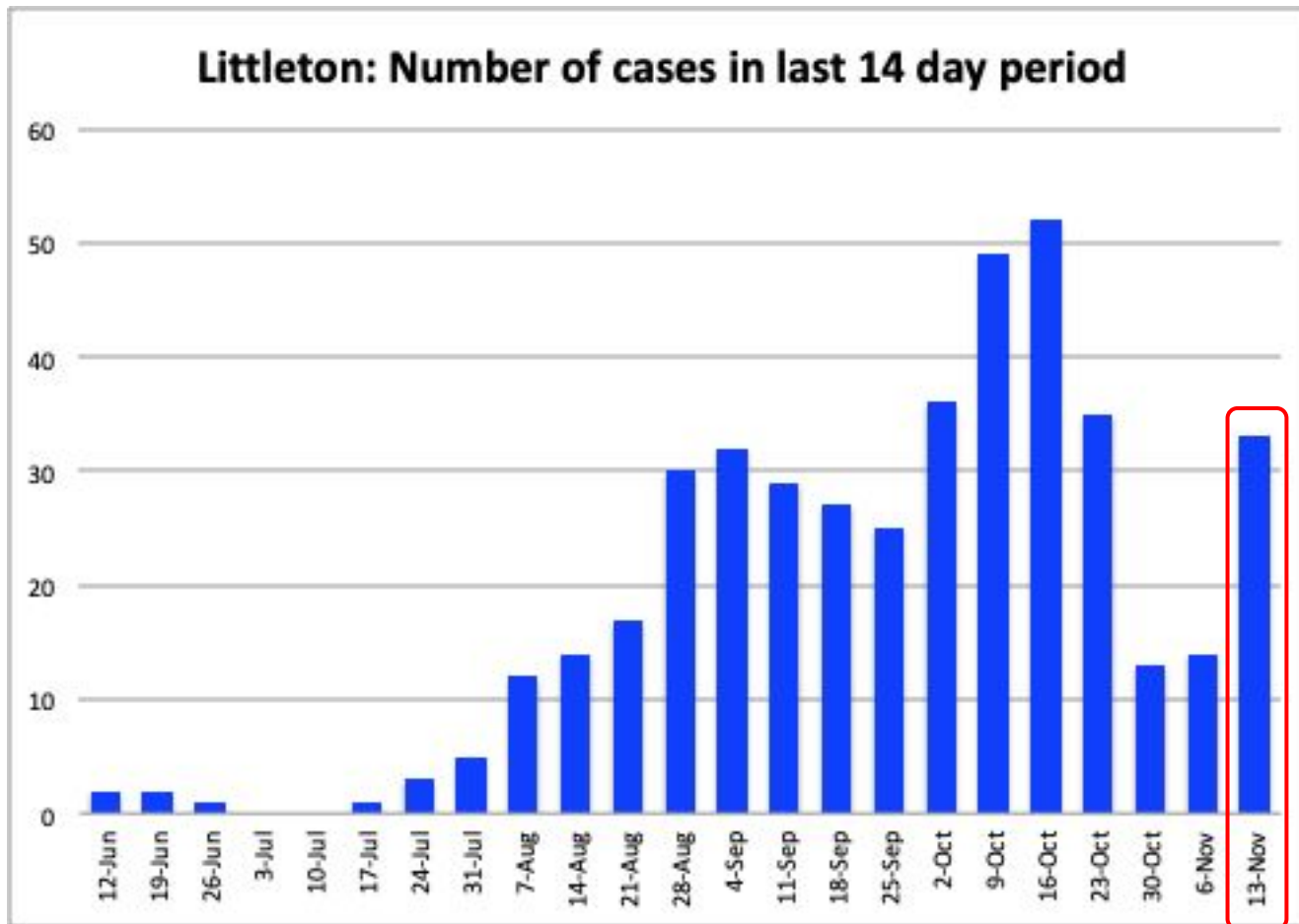
Occupied beds

As of today, **92%** of medical/surgical beds are occupied and **84%** of ICU beds are occupied.

Number of admissions during the last two weeks by Age

Age	10/27/21	11/3/21	11/10/21	11/18/21
0-19	15	15	14	21
20-29	38	42	41	43
30-39	76	75	66	74
40-49	85	87	79	83
50-59	124	117	134	150
60-69	159	145	159	158
70-79	156	163	162	166
80+	171	167	171	205

Littleton Data



Data Source: MA DPH Covid Dashboard - www.mass.gov/info-details/covid-19-response-reporting (City and Town Data) - accessed 11/18/21

Littleton and Local Trends - Methods

Town Groupings:

- **Littleton**
- **Border Towns** - Littleton plus Acton, Ayer, Boxborough, Groton, Harvard, Westford
- **Surrounding Communities** - Border Towns plus, Bolton, Carlisle, Chelmsford, Concord, Dunstable, Lancaster, Lunenburg, Maynard, Pepperell, Shirley, Stow
- **495 Belt** - Surrounding Communities plus Ashby, Bedford, Berlin, Boylston, Clinton, Hudson, Leominster, Lincoln, Lowell, Marlborough, Northborough, Shrewsbury, Southborough, Sterling, Sudbury, Townsend, Tyngsboro, Wayland, West Boylston, Westborough, Weston
- **Middlesex County**
- **Massachusetts**

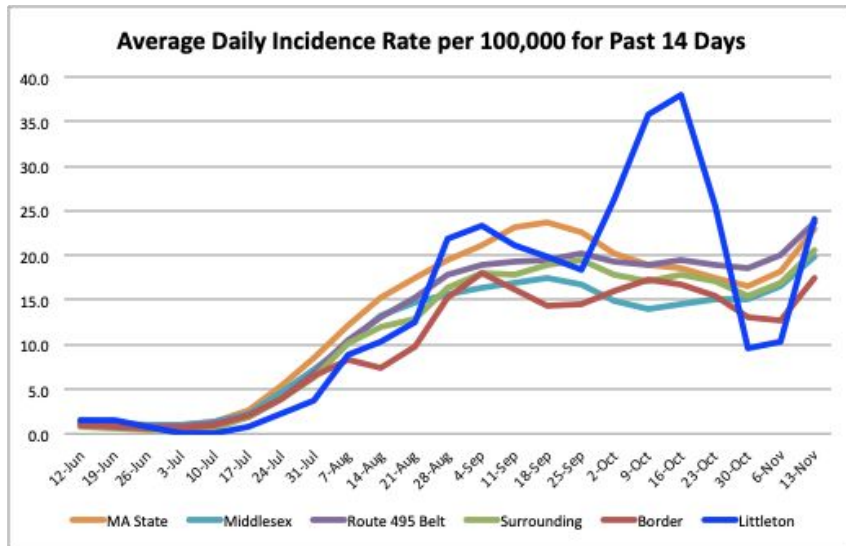
Data Source and Time Period:

- MA DPH Covid Dashboard - www.mass.gov/info-details/covid-19-response-reporting, City and Town Data
- Two week period (Sunday to Saturday) ending the Saturday before the DPH report is released on Thursdays

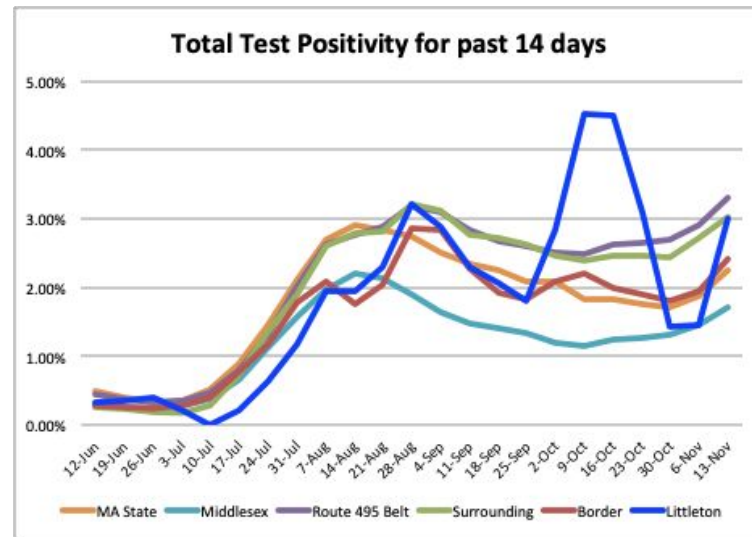
Calculations:

- **Average Daily Incidence Rate** = ((total cases in two week period / 14 days) / population)*100,000
- **Test Positivity** = total positive tests in last two week period / total tests conducted in last two week period

Littleton and surrounding area - trends



- Littleton's average daily incidence rate was 24.2 per 100k (2x higher than prior two week period)
- All other areas we track also trended higher



- Littleton had 1104 tests conducted (higher)
- Littleton's test positivity = 2.99%
- Test positivity was 3% or lower for all other areas that we track

CDC Community Transmission Indicator: Total new cases per 100k persons in the past 7 days



Data Source: MA DPH Covid Dashboard - www.mass.gov/info-details/covid-19-response-reporting (City and Town Data) - accessed 11/18/21

LPS Covid-19 cases last 6 weeks

10/11-10/15 10/18-10/22 10/23-10/29 10/30-11/5 11/6-11/12 11/13-11/20

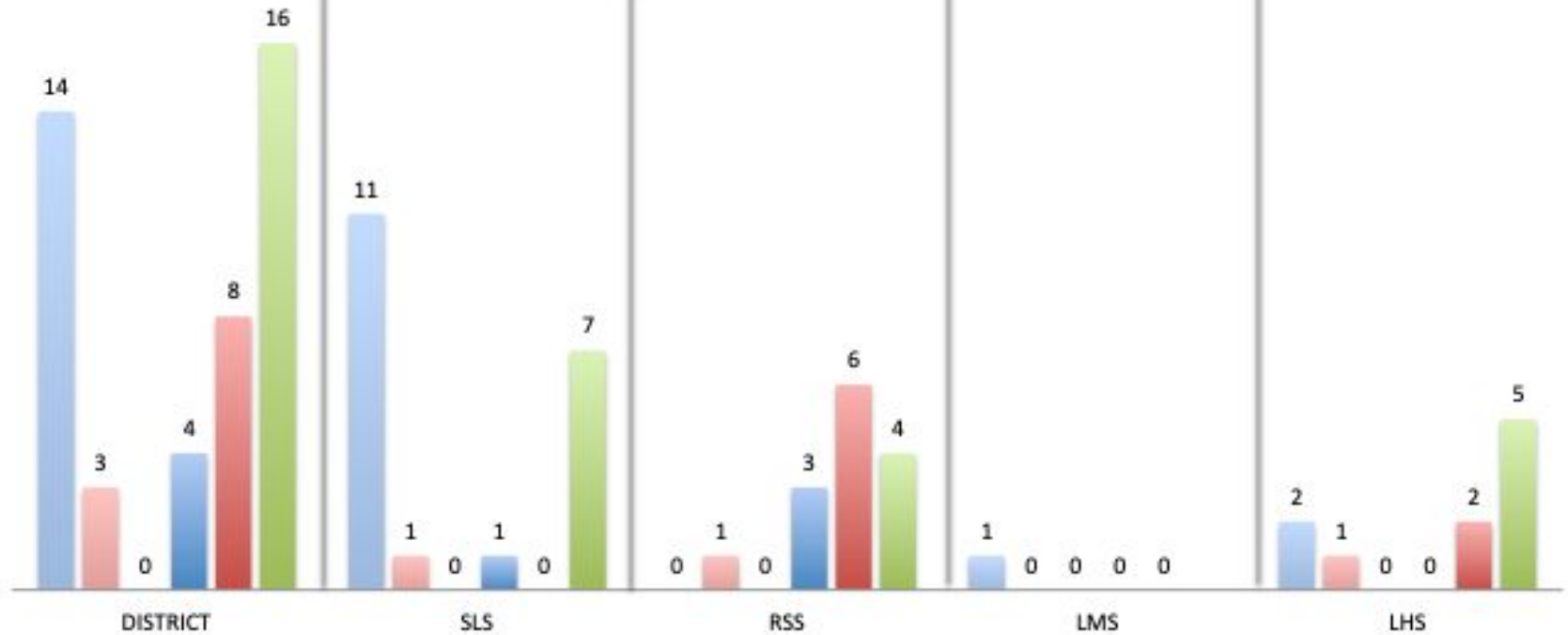
District Total = 62

SLS Total = 20

RSS Total = 17

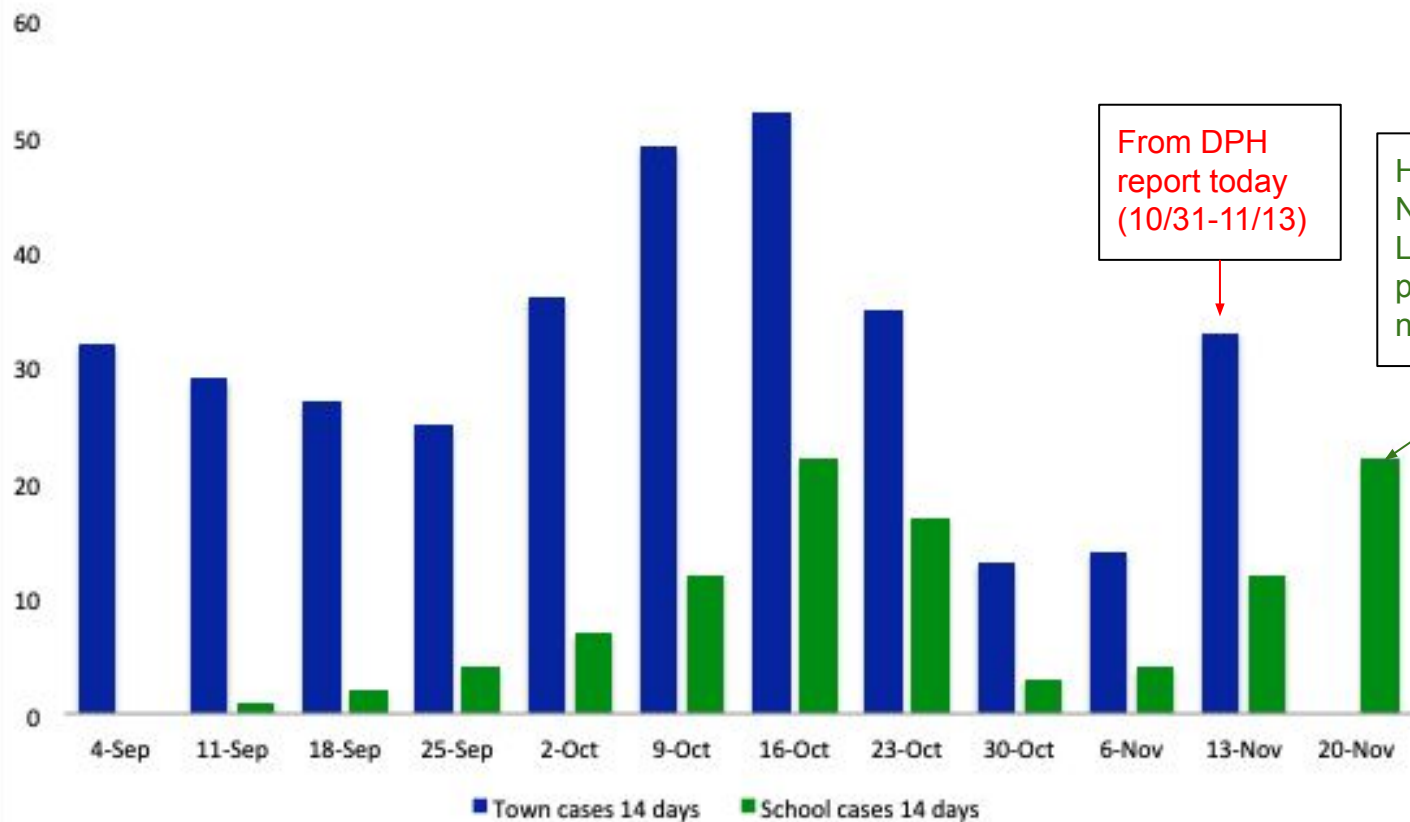
LMS Total = 6

LHS Total = 19



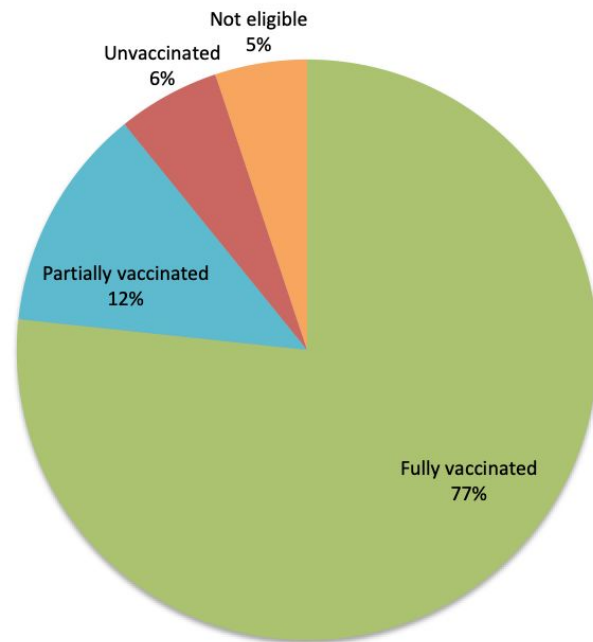
Data Sources: [Littleton Public Schools Covid-19 Dashboard](#) and LPS Health Notification Letters sent to parents as of 11/18/21

Last Two Weeks: Town Cases vs. School Cases



Littleton Vaccination Coverage

Age Group	Fully Vaccinated	Partially Vaccinated	Unvaccinated
0-4 years	Not eligible	Not eligible	502 (100%)
5-11 years	*	383 (48%)	416 (52%)
12-15 years	479 (92%)	58 (11%)	*
16-19 years	446 (80%)	23 (4%)	90 (16%)
20-29 years	817 (90%)	97 (11%)	*
30-49 years	2024 (92%)	234 (11%)	*
50-64 years	2169 (87%)	177 (7%)	142 (6%)
65-74 years	972 (>95%)	139 (13%)	*
75+ years	598 (76%)	109 (14%)	78 (10%)
Total	7505 (76.9%)	1221 (13%)	Total 1030 (11%) Eligible 529 (6%)



Data Source:
MA DPH Weekly Covid-19 municipality
vaccination data -
www.mass.gov/info-details/massachusetts-covid-19-vaccination-data-and-updates - accessed
11/18/21
Note: 0-4 data imputed based on population and
eligibility.

COVID-19 vaccinations for children ages 5-11

Children ages 5 to 11 who live or go to school in Massachusetts are now eligible to get the Pfizer vaccine. The vaccine is safe, free and effective. You don't need identification or insurance to get it.



Search vaccine locations at vaxfinder.mass.gov



Am I eligible for a COVID-19 booster shot?



Who?

Individuals **18+** who are fully vaccinated



When?

- At least 6 months after Pfizer or Moderna
- At least 2 months after J&J

Which booster shot do I get?

- You may have a preference, but you can get any type of vaccine for your booster shot



More information at mass.gov/COVID19booster

Safer Ways to Celebrate Holidays

Holiday traditions are important!

We have several tools to help enjoy holiday traditions while protecting your family and friends

Get Vaccinated / Booster

- **Vaccination is the best way to minimize risk of Covid-19 among attendees**
- Vaccination significantly lowers the risk of transmission at the event
- If transmission was to occur, vaccination protects individuals from severe outcomes, hospitalizations, and death

Get tested

- Test before an event to limit risk of infectious person being present
- Test 3 days after event to prevent onward transmission
- Try rapid antigen tests - results in 15 minutes, can be purchased over-the-counter

Make plans for safe travel

Improve ventilation

- Open doors and windows
- HEPA filtration
- Outdoors safer than indoors

Wear a mask indoors

- Well-fitting, better quality
- Worn over nose and mouth

Special considerations

- Immunocompromised should follow recommendations for unvaccinated people, including wearing a mask

Know when not to attend or host

- If you or anyone in your household is sick or has symptoms
- If you've had a known exposure to someone with Covid-19