

# Covid-19 Health Metrics

October 14, 2021

Prepared by Katrina Wilcox Hagberg, MPH

# MA State Data



# Massachusetts Department of Public Health | COVID-19 Dashboard

## Trends: 7-day Averages Over Time

Released on: October 14, 2021  
Data as of: October 13, 2021  
Caution: recent data may be incomplete

### Navigation

Today's Overview

#### Overview Trends

COVID-19 Cases

COVID-19 Testing

Hospitalizations

COVID-19 Deaths

Higher Ed & LTCF

Patient Breakdown

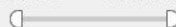
City & Town Data

Resources

Data Archive

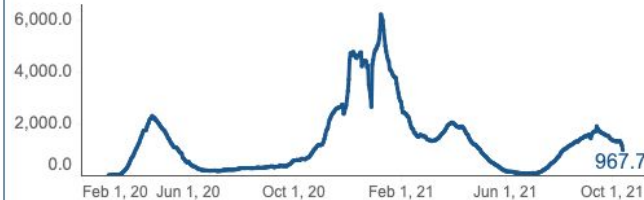
#### Select dates:

3/1/2020 10/13/2021



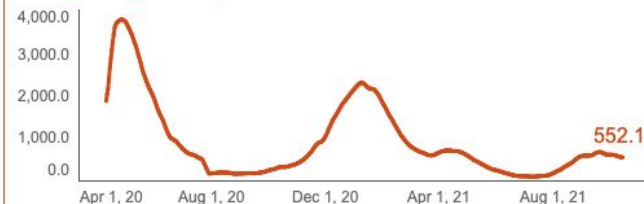
### Cases

#### 7-day average of COVID-19 confirmed cases



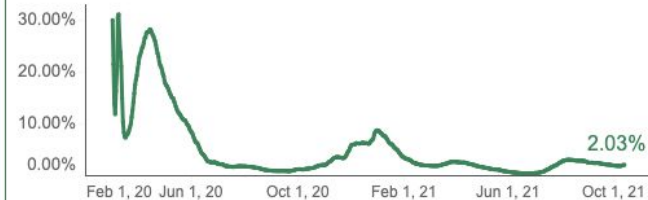
### Hospitalizations

#### 7-day average of hospitalizations



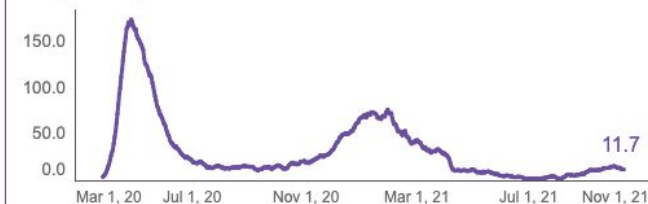
### Testing

#### 7-day weighted average percent positivity



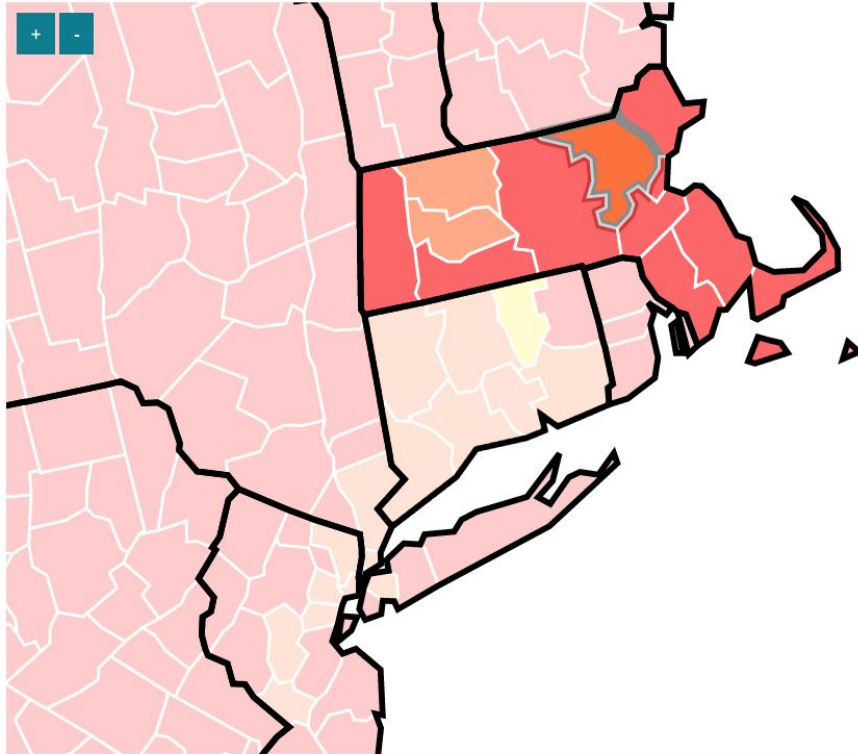
### Deaths

#### 7-day average of confirmed deaths



The lowest observed value is since tracking of the lowest value began on April 15, 2020. For details on the definitions of each indicator please see the corresponding tab for that indicator. All data included in this dashboard are preliminary and subject to change. Data Sources: COVID-19 Data provided by the Bureau of Infectious Disease and Laboratory Sciences and the Registry of Vital Records and Statistics; Created by the Massachusetts Department of Public Health, Bureau of Infectious Disease and Laboratory Sciences, Office of Integrated Surveillance and Informatics Services.

# CDC Community Transmission Rates



## Middlesex County

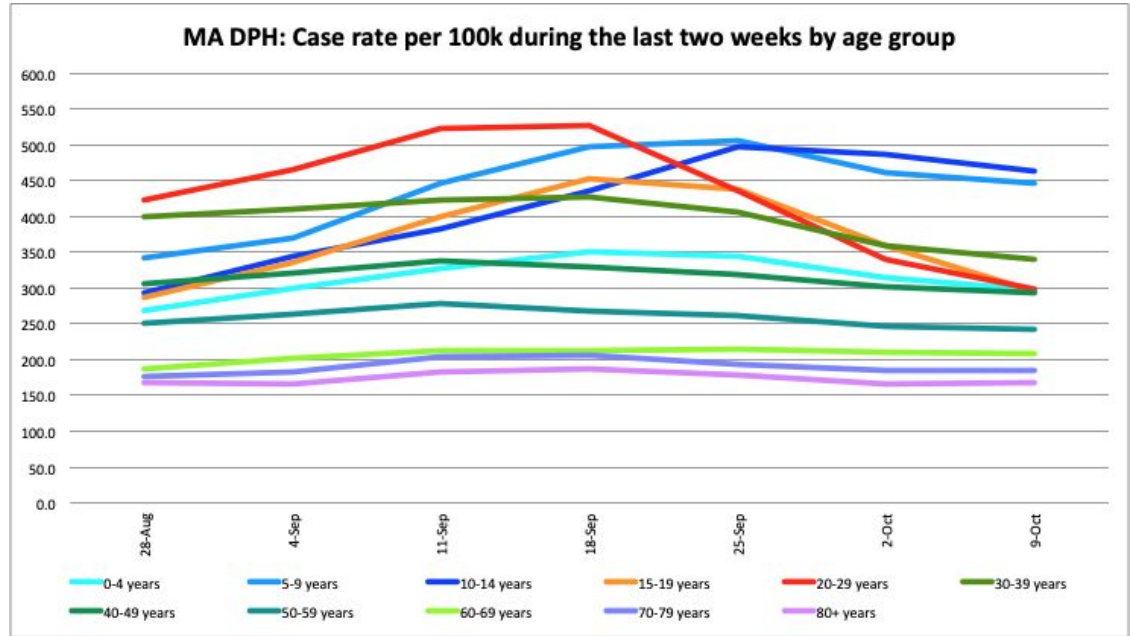
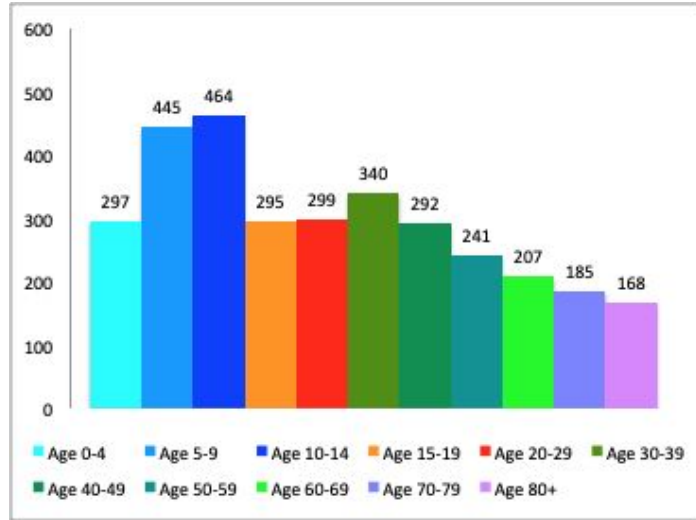
**Substantial Community Spread (Orange)**

Case Rate last 7 days = 96 per 100k (stable)

Percent Positivity = 1.1% (stable)

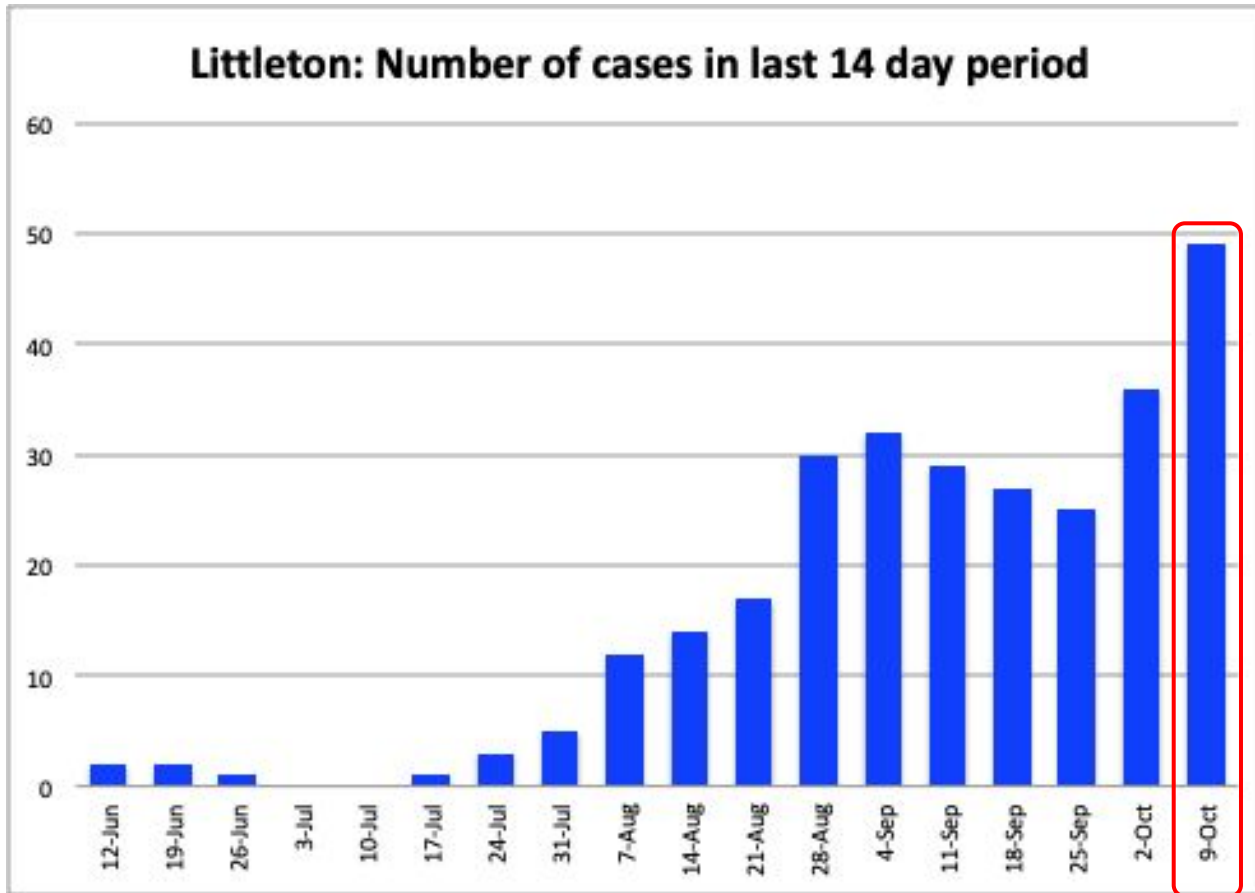
● High ● Substantial ● Moderate ● Low ● No Data

# Covid Case Rate per 100k by age group - last 6 weeks



Data Source: MA DPH Covid Dashboard [www.mass.gov/info-details/covid-19-response-reporting](http://www.mass.gov/info-details/covid-19-response-reporting) (Patient Breakdown) - accessed 10/14/21

# Littleton Data



Data Source: MA DPH Covid Dashboard - [www.mass.gov/info-details/covid-19-response-reporting](http://www.mass.gov/info-details/covid-19-response-reporting) (City and Town Data) - accessed 10/14/21

# Littleton and Local Trends - Methods

## Town Groupings:

- **Littleton**
- **Border Towns** - Littleton plus Acton, Ayer, Boxborough, Groton, Harvard, Westford
- **Surrounding Communities** - Border Towns plus, Bolton, Carlisle, Chelmsford, Concord, Dunstable, Lancaster, Lunenburg, Maynard, Pepperell, Shirley, Stow
- **495 Belt** - Surrounding Communities plus Ashby, Bedford, Berlin, Boylston, Clinton, Hudson, Leominster, Lincoln, Lowell, Marlborough, Northborough, Shrewsbury, Southborough, Sterling, Sudbury, Townsend, Tyngsboro, Wayland, West Boylston, Westborough, Weston
- **Middlesex County**
- **Massachusetts**

## Data Source and Time Period:

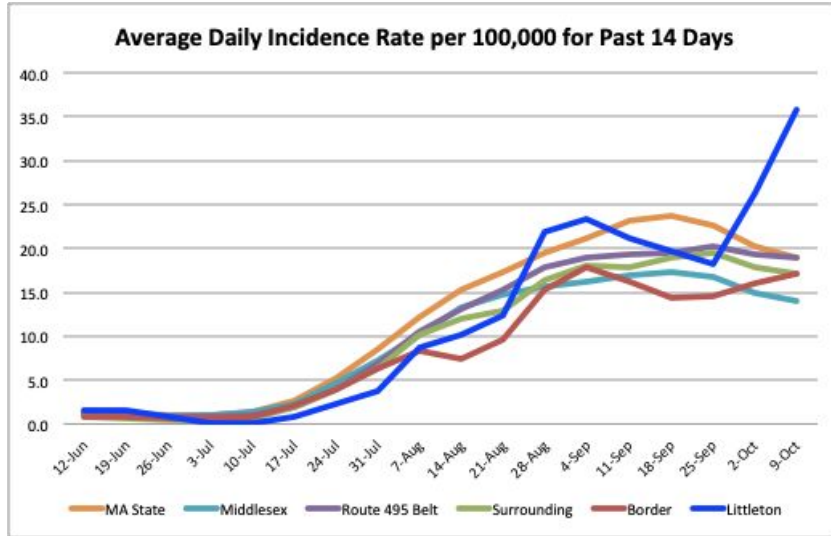
- MA DPH Covid Dashboard - [www.mass.gov/info-details/covid-19-response-reporting](http://www.mass.gov/info-details/covid-19-response-reporting), City and Town Data
- Two week period (Sunday to Saturday) ending the Saturday before the DPH report is released on Thursdays

## Calculations:

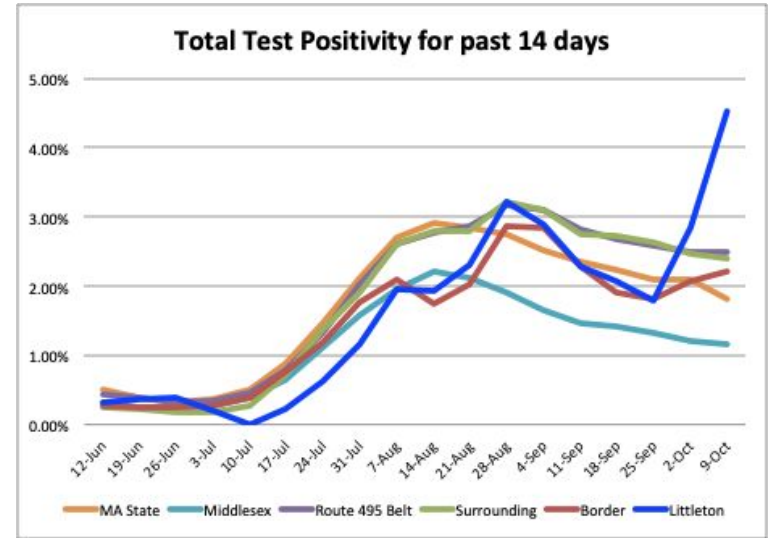
- **Average Daily Incidence Rate** = ((total cases in two week period / 14 days) / population)\*100,000
- **Test Positivity** = total positive tests in last two week period / total tests conducted in last two week period



# Littleton and surrounding area - trends



- Littleton's average daily incidence rate was 35.9 per 100k (higher than 2 weeks ago - 18.3)
- Border towns had trended higher (17.2) but the increase is largely due to Littleton's increase (small increases in Ayer and Westford too)
- All other areas we track were stable or declined



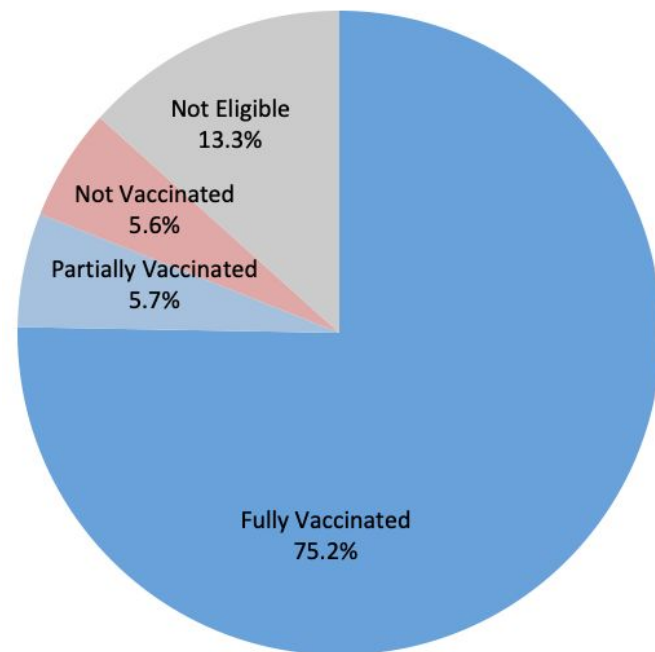
- Littleton had 1125 tests conducted (20% lower)
- Littleton's test positivity = 4.53% (increase)
- Test positivity was <3% for all other areas that we track

**CDC Community Transmission Indicator:  
Total new cases per 100k persons in the past 7 days**



# Littleton's Vaccination Coverage

Age Group	Fully Vaccinated	Partially Vaccinated	Not Vaccinated
0-11	Not eligible	Not eligible	1301 (100%)
12-15	459 (89%)	65 (13%)	*
16-19	441 (79%)	33 (6%)	91 (16%)
20-29	795 (88%)	82 (9%)	30 (3%)
30-49	1991 (90%)	154 (7%)	57 (3%)
50-64	2132 (86%)	104 (4%)	252 (10%)
65-74	942 (95%)	69 (7%)	*
75+	574 (73%)	72 (9%)	139 (18%)
<b>Total</b>	<b>7334 (75.2%)</b>	<b>558 (5.7%)</b>	<b>549 eligible (5.6%)</b> 13% not eligible due to age <12 years

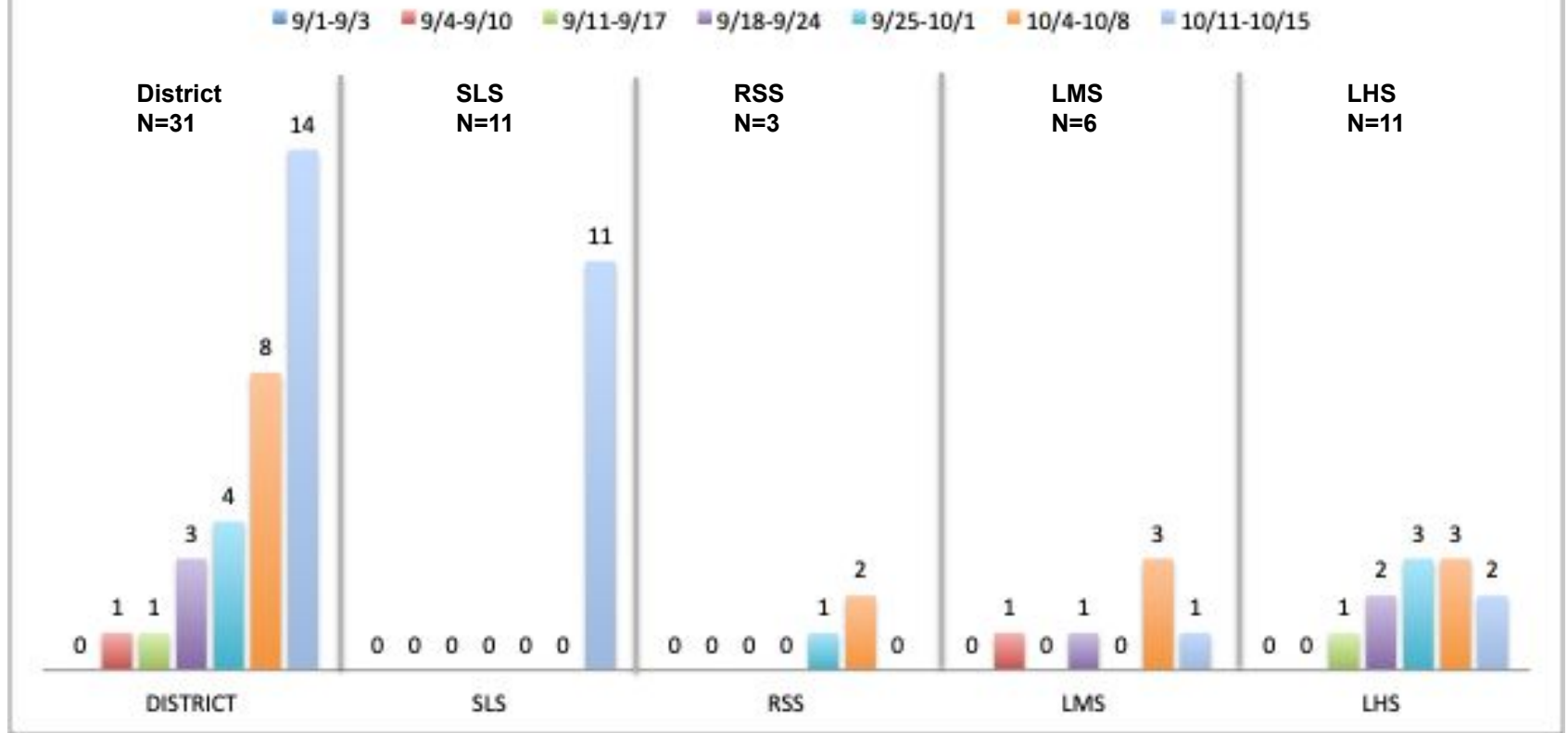


Data Source:

MA DPH Weekly Covid-19 municipality vaccination data - [www.mass.gov/info-details/massachusetts-covid-19-vaccination-data-and-updates](https://www.mass.gov/info-details/massachusetts-covid-19-vaccination-data-and-updates) - accessed 10/14/21

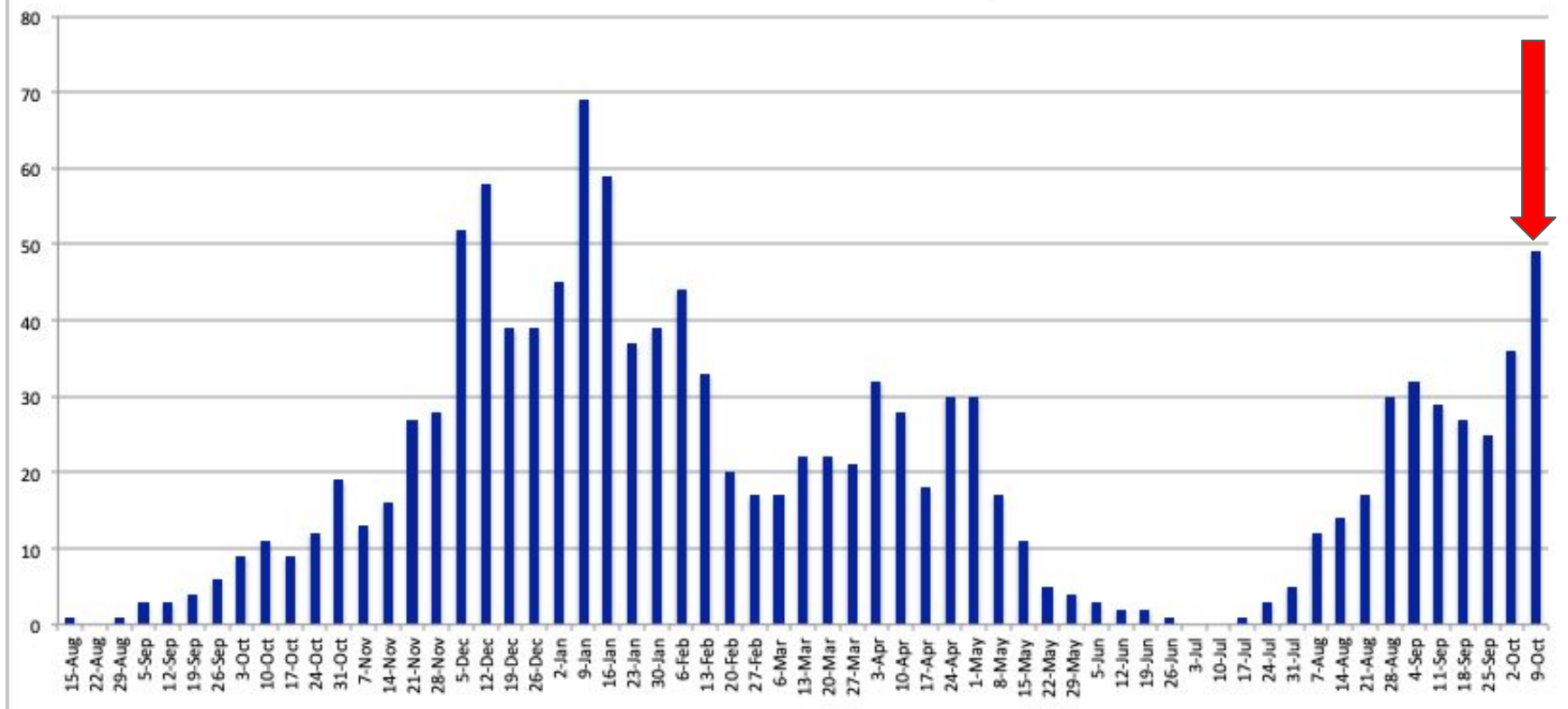
Note: 0-11 data imputed by subtracting total population in 12+ age groups from total population

## LPS Covid-19 Cases, by School



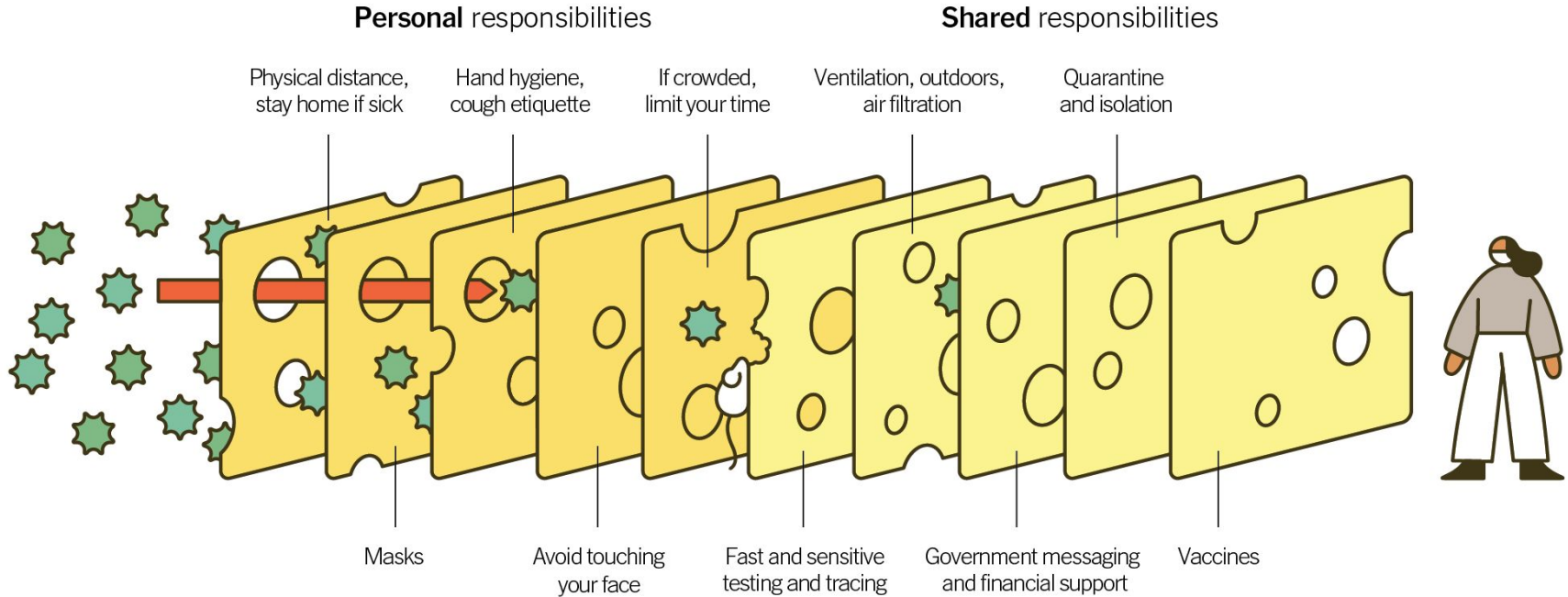
Data Sources: [Littleton Public Schools Covid-19 Dashboard](#) and LPS Health Notification Letters sent to parents as of 10/16/21

Littleton: Number of Cases in 14 Day Period



# Multiple Layers Improve Success

The Swiss Cheese Respiratory Pandemic Defense recognizes that no single intervention is perfect at preventing the spread of the coronavirus. Each intervention (layer) has holes.

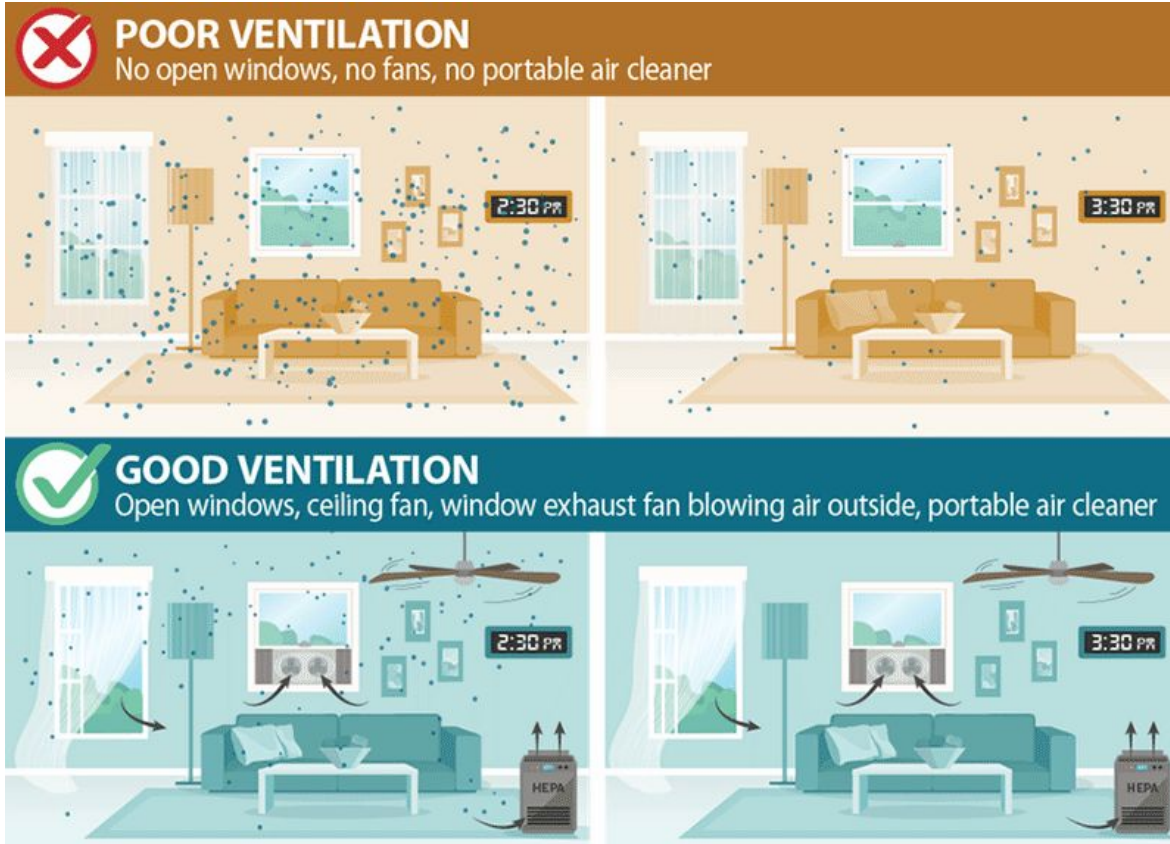


Source: Adapted from Ian M. Mackay (virologydownunder.com) and James T. Reason. Illustration by Rose Wong

Image from: [www.nytimes.com/2020/12/05/health/coronavirus-swiss-cheese-infection-mackay.html](https://www.nytimes.com/2020/12/05/health/coronavirus-swiss-cheese-infection-mackay.html)

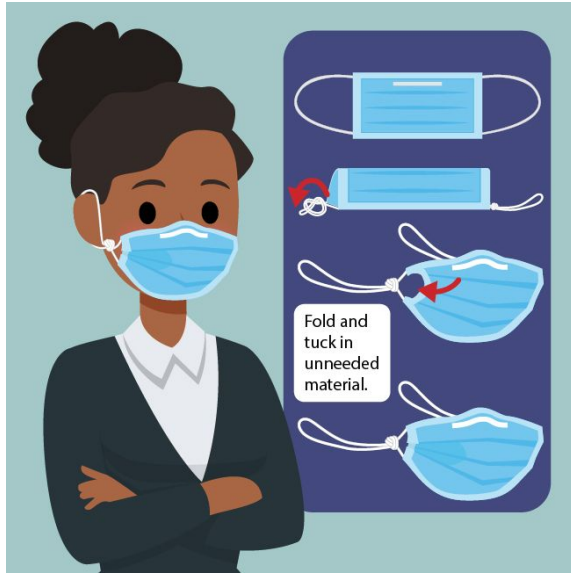
# Covid is airborne:

Improve ventilation or add a portable air cleaner





# Mask Indoors: Time to Improve Fit and Filtration



More details at  
[www.cdc.gov/coronavirus/2019-ncov/prevent-getting-sick/mask-fit-and-filtration](https://www.cdc.gov/coronavirus/2019-ncov/prevent-getting-sick/mask-fit-and-filtration)



# Early Detection is key - Get Tested

[Home](#)[Testing](#)[Vaccination](#)[Find Us](#)[Press](#)[FAQ](#)[English](#)[School Testing](#)

COVID-19 Testing Consent for

## Massachusetts Schools

The Commonwealth of Massachusetts has partnered with CIC Health to provide free COVID-19 testing to students, teachers, and staff.

[Consent Now](#)[Learn More](#)



**Protect  
Against  
COVID-19.**

Safe and effective COVID-19 vaccines are available for free for everyone living in the United States.

[www.cdc.gov](https://www.cdc.gov)

