



SHAKER LANE SCHOOL

School Improvement Plan
July 1, 2006 - June 30, 2008



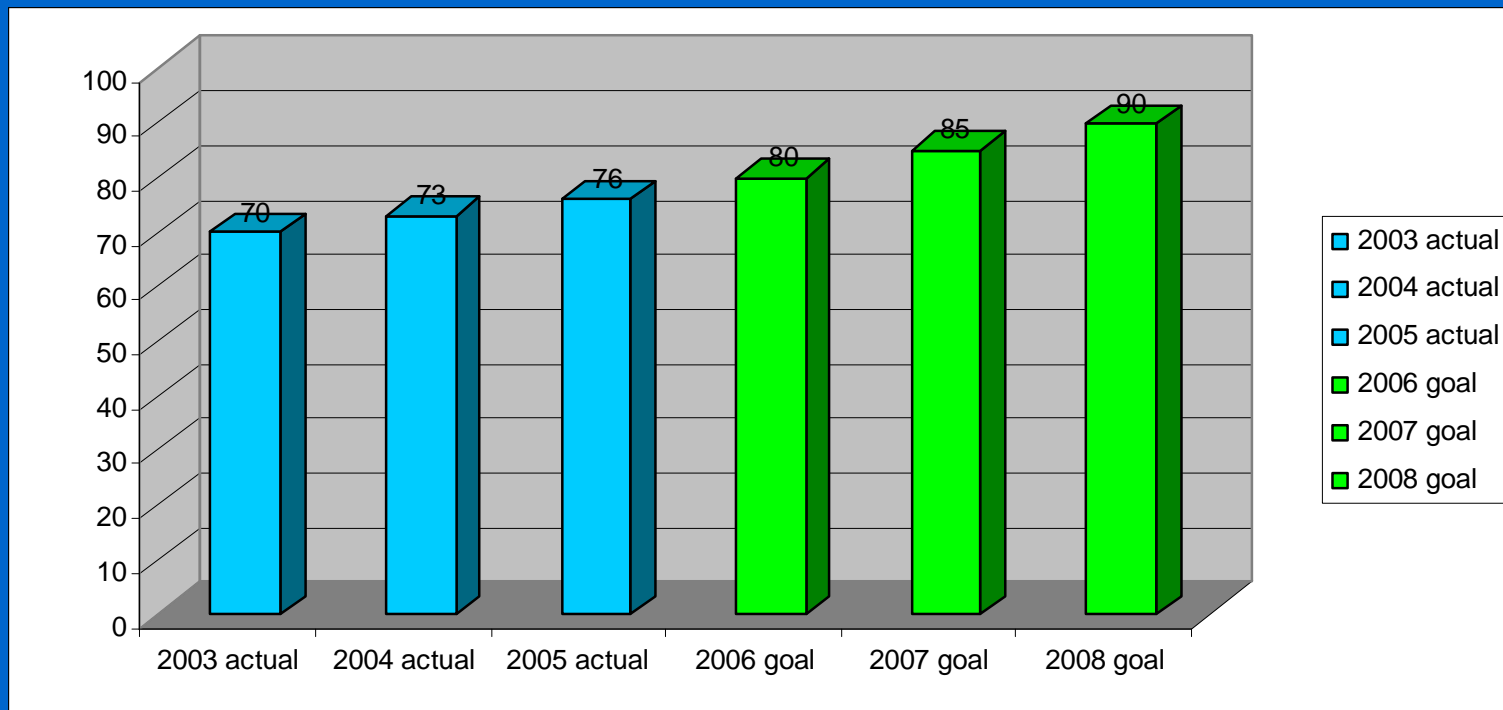
•
•
•

Whatever it takes we will learn.

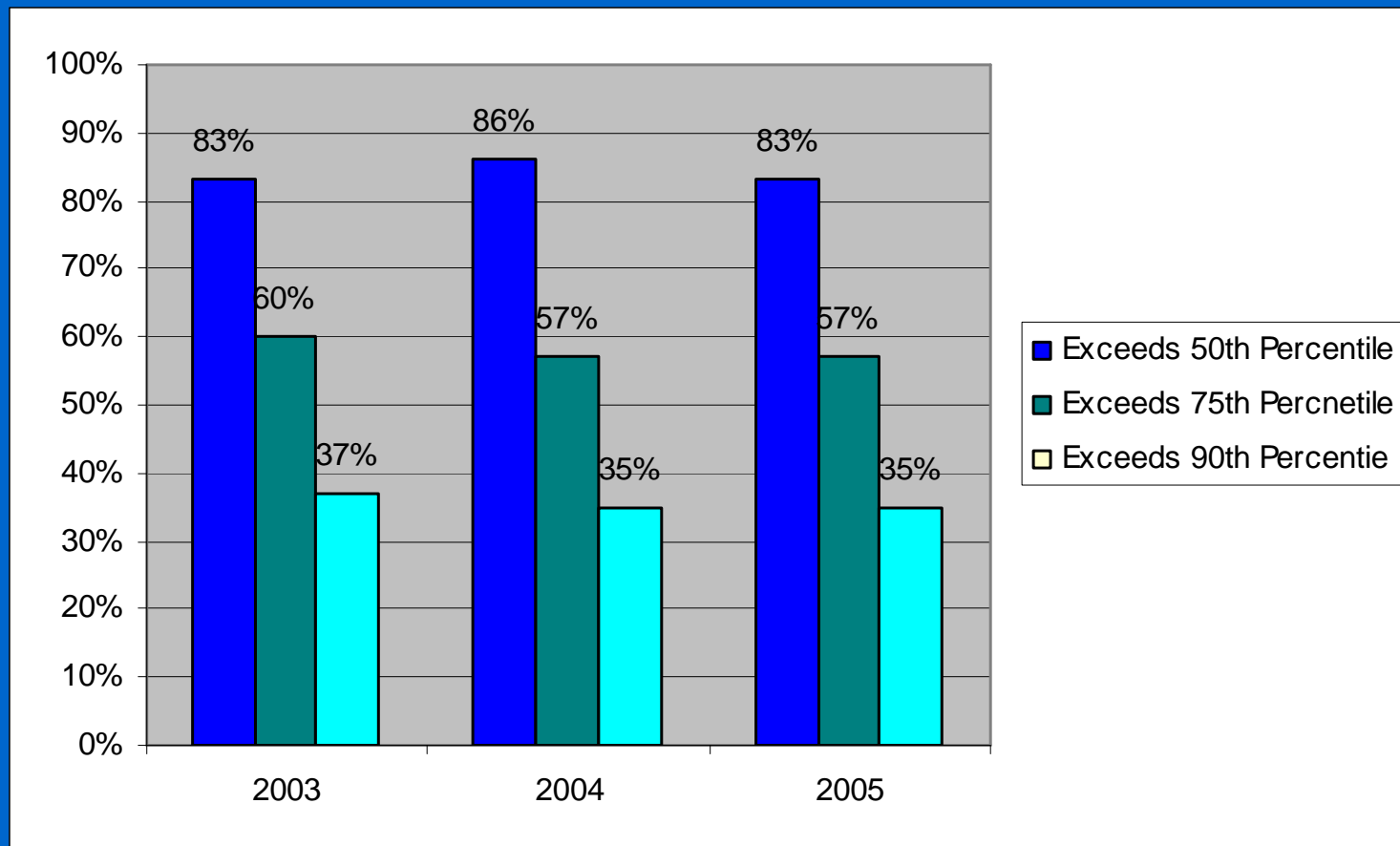
- To support every child's quest for knowledge, our curriculum, founded on sound educational research, is developmentally appropriate and based on the Massachusetts Curriculum Frameworks

Grade 1 DRA

(Percentage of students at level 18)



Grade 2 Stanford Reading Results

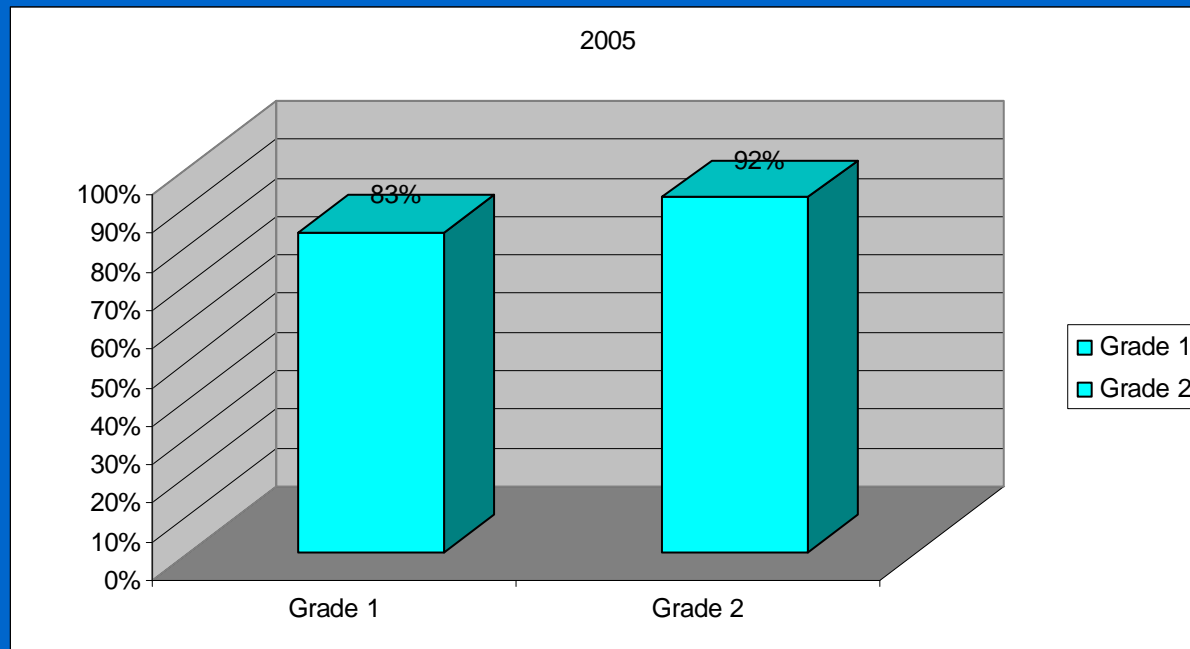


Strategies for Improvement in Reading

- Assessing all students three times yearly using DIBLES
- Continue Direct instruction in Phonemic Awareness in Pre-K to grade 1
- Professional Development
- Currently piloting two reading series

Grade 1 & 2 Writing Assessments

(Percentage of students secure or above)

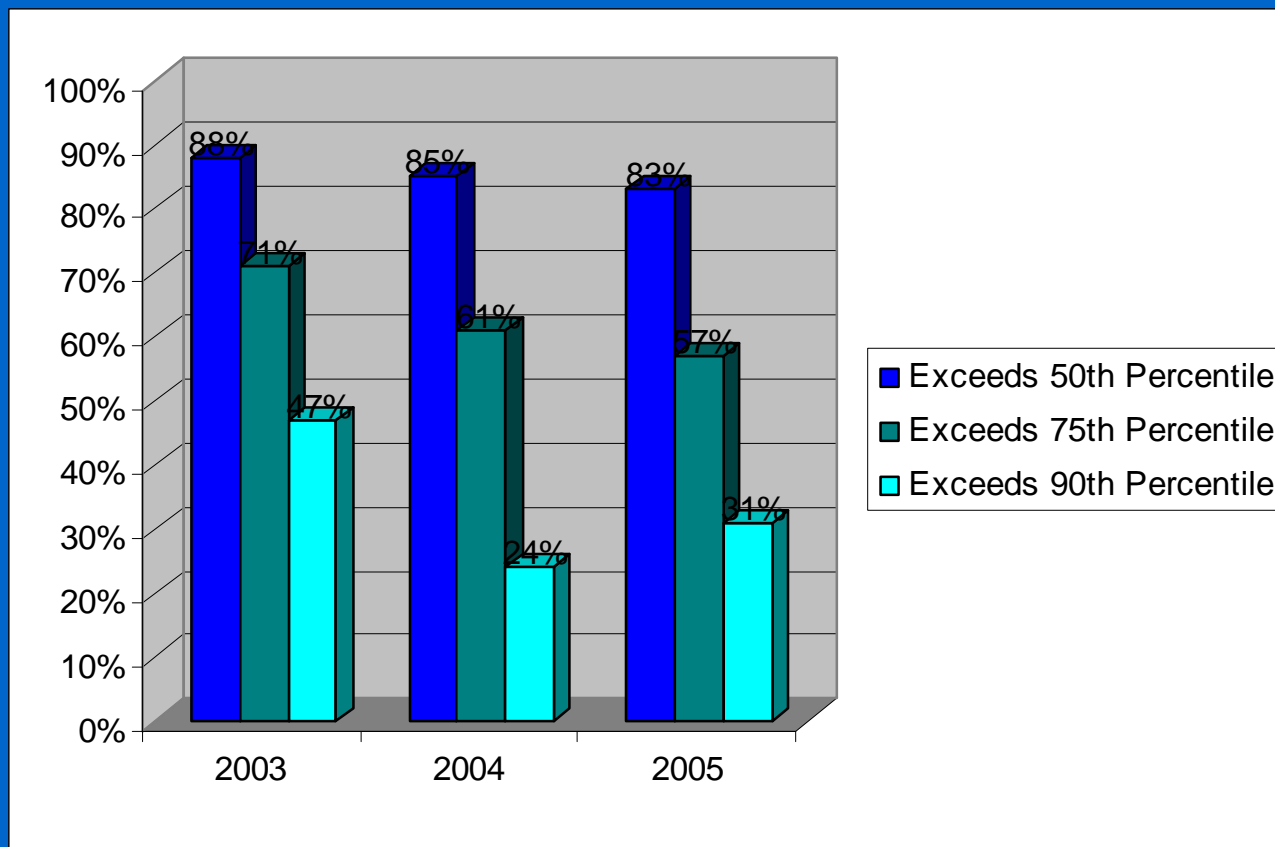


⋮

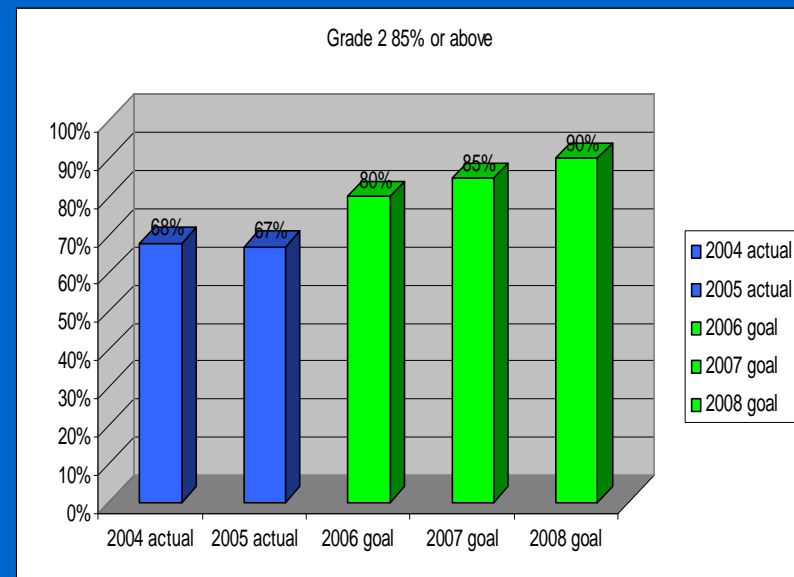
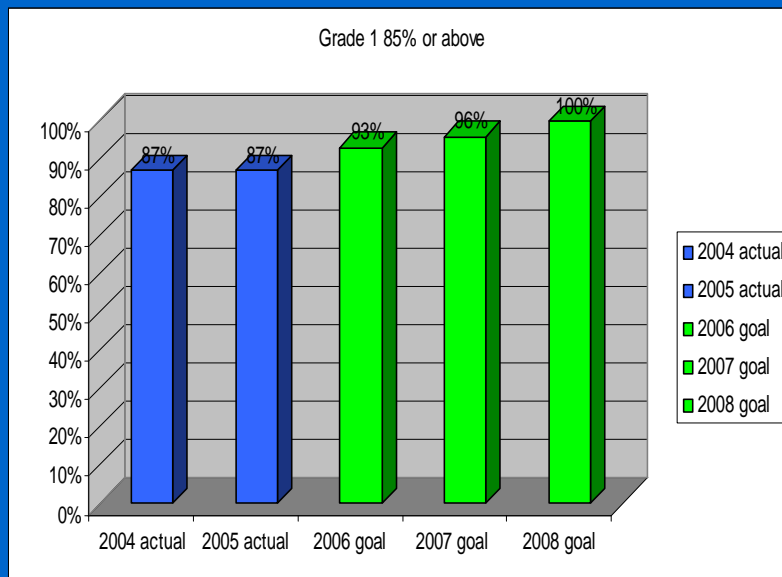
Strategies for Improvement in Writing

- Trimester writing prompts developed
- Scoring rubrics developed

Grade 2 Stanford Math Results



Grades 1 & 2 End of Year Math Assessment



Strategies for Improvement in Math

- Trimester/End of Unit Math Assessments
- Expanded Math block to 60 mins.
- Provided for flexible grouping for instruction that provide opportunities for remediation and challenge

New Assessments

- Trimester Writing Assessments
- DIBLES

Beginning in the spring of 2006 the Stanford Achievement Tests will be replaced by

- GRADE (Reading)
- G-MADE (Math)

•
•
•

HEART

- Honesty
 - Effort
 - Acceptance
 - Respect
 - Take Responsibility
- • • • • • • • • •



HEART

- Helping
 - Everyone
 - Achieve
 - Results
 - Together
- 
- 